

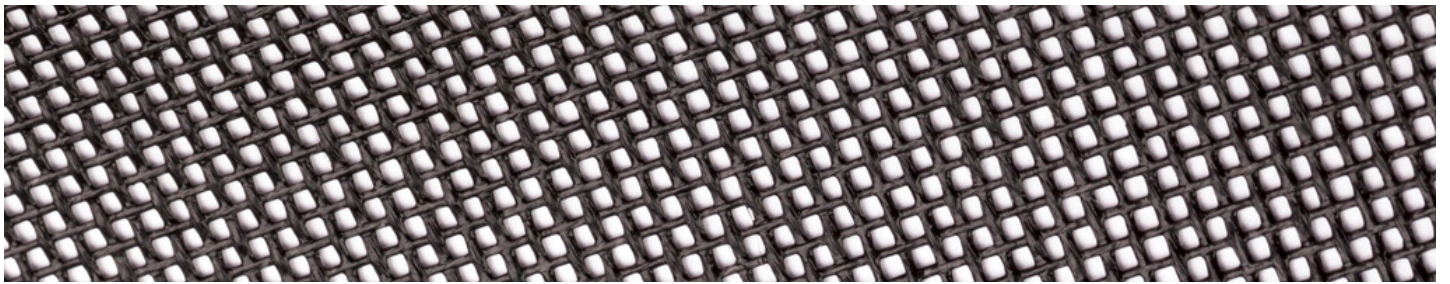


WOVEN PVC COATED POLYESTER WINDOW MESH

TENTS | ANNEXES | CAMPER TRAILERS | CARAVANS

Tentex is the dependable, regular-weave choice for the caravan and camping industry. Purpose-built for durability and ease of use, it provides an ideal balance of shade and privacy for standard annex screens and partitions. Its rugged construction ensures long-lasting performance, making it a staple for outdoor enthusiasts seeking reliable protection.

COLOUR RANGE



BLACK

TECHNICAL SPECIFICATIONS

Roll Width	205cm	Roll Length	50m
Nominal Weight	170gsm	Thickness	0.33mm
Openness	40%	Shade Cover	60%



2-year UV warranty



UV stabilised





Ricky Richards (Sales) Pty. Ltd | ABN 18 000 946 725
1300 RICKYS (1300 742 597)
sales@rickyrichards.com.au
rickyrichards.com.au

MAY 2026

Information contained in this brochure is accurate and based on the latest product information available at the time. Please be aware that a slight colour difference may occur when using different online devices or when printed.

While Ricky Richards (Sales) P/L makes all efforts to provide accurate information, we maintain the right to make changes as necessary.