

SHADE RANGE

Featuring

Bochini®

Coolshade®

Ferroshade®

Fluo²Max

Proudly endorsed by



EXPLORE
OUR SHADE
RANGE

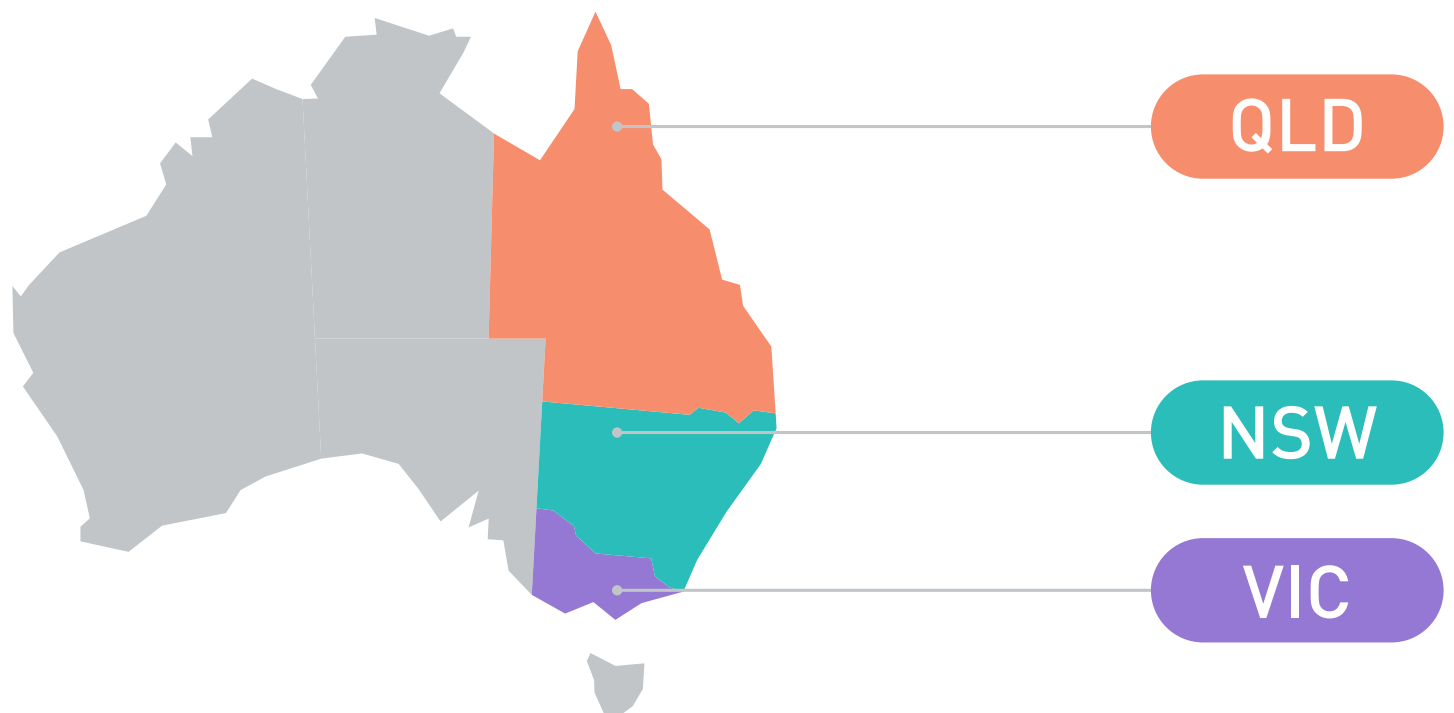
You can rely on Ricky

Expert Customer Service

Speedy & Reliable Delivery

High-Quality Product Range

With offices in:



Our Divisions



Sun
Control



Technical
Textiles



Print
Media

Ricky Shade

Shading is especially important under the harsh Australian sun, and we have fabrics that are made for it. Whether you require something with airflow or water resistance, each of these products is built to protect.



Ricky shade fabrics are proudly endorsed by the Australian Skin Cancer Foundation. Our high-quality shade fabrics combine durability and UV resistance to ensure lasting protection from the elements.

BOCHINI

TENSILE STRUCTURE FABRIC – TYPE 0

For lightweight tensioned structures, retractable roofing systems, marquees & tents



COOLSHADE

COMMERCIAL SHADE CLOTH

For shade sails, shade structures & tensioned structures



FERROSHade

100% HDPE MONOFILAMENT YARN

For car park structures, shade sails, playgrounds, schools & sports complexes



FLUO²MAX

TENSILE ARCHITECTURE MEMBRANE – TYPE 1 & TYPE 2

For lightweight tensioned structures, marquees & tents, carpark structures & umbrellas





TENSILE STRUCTURE FABRIC – TYPE 0

For lightweight tensioned structures, retractable roofing systems, marquees & tents



 Ricky

 BOCHINI



INNOVATION MEETS ELEGANCE

Bochini is the epitome of excellence in type 0 tensile structure fabric, meticulously crafted to elevate your outdoor spaces to new heights.

Ideal for lightweight tensioned structures, retractable roofing systems, marquees, and tents, Bochini offers unmatched versatility and performance. With an extensive palette of 11 captivating colors, including four inspired by COLORBOND®, Bochini provides endless possibilities for adding flair to any project. Whether you're seeking vibrant hues or subtle tones, there's an option to suit every taste and style. Additionally, Bochini is also available in blackout in 3 colours, offering complete versatility in design and application.



FULL 10-YEAR UV WARRANTY

Bochini fabrics are supported by a full 10-year warranty.



UV STABILISED

Bochini fabrics are UV stabilised which prevents them from fading under intense UV rays. This increases the textiles' longevity and ensures easy cleaning.



FIRE RETARDANT

Bochini has a fire rating of B1, the fabrics are designed for commercial environments and are tested to the relevant Australian standards. Test results available by request.



WATERPROOF

Bochini fabrics are coated with a waterproof finish.



FUNGICIDE TREATED & MILDEW RESISTANT

Bochini fabrics have been finished with a fungicide treatment that kills parasitic fungi or their spores. This treatment provides ease of maintenance by inhibiting mildew growth. It also improves the textiles' longevity and makes for easy cleaning.



COLOURS INSPIRED BY COLORBOND®

A selection of colours throughout the Bochini collection are inspired by COLORBOND®, matching any existing outdoor theme.



REACH COMPLIANT

Bochini is REACH compliant. REACH regulations were created to improve the environment and protect human health. REACH addresses the risks associated with chemicals and promotes alternative methods for the hazard assessment of substances.

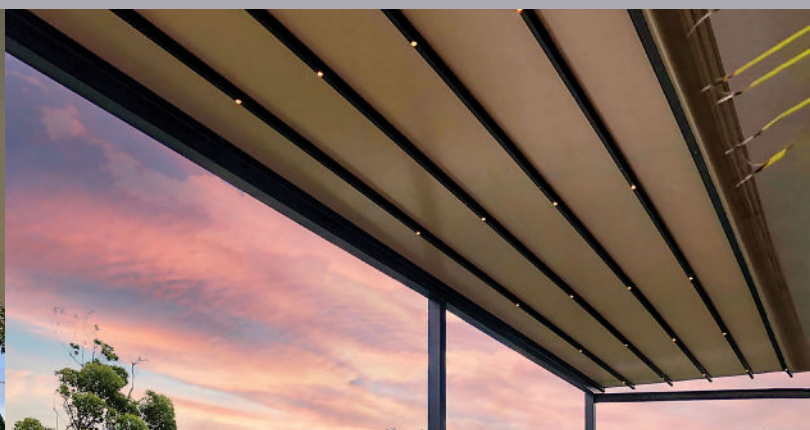


Ricky shade fabrics are proudly endorsed by the Australian Skin Cancer Foundation. Our high-quality shade fabrics combine durability and UV resistance to ensure lasting protection from the elements.

TENSILE STRUCTURES



RETRACTABLE ROOFING SYSTEMS



COLOUR RANGE



WHITE
(AVAILABLE IN BLOCKOUT)



CREAM



CHAMPAGNE
(AVAILABLE IN BLOCKOUT)



PAPERBARK®*



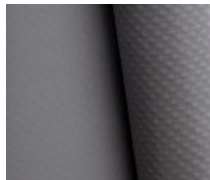
ROYAL BLUE



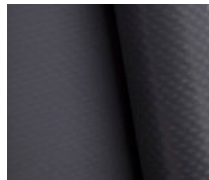
NAVY



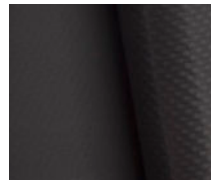
SHALE GREY™*
(AVAILABLE IN BLOCKOUT)



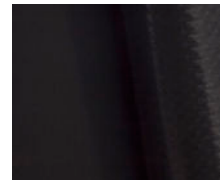
MID GREY



IRONSTONE®*



MONUMENT®*



BLACK

*Inspired by COLORBOND®

TECHNICAL SPECIFICATIONS

Roll Width	300cm
Roll Lengths	30m (all colours), 65m (all colours excluding Champagne Blockout & Shale Grey Blockout)
Nominal Weight	580gsm (all colours), 750gsm (blockout only)
Fabric Type	PVC coated material with woven polyester scrim
Base Fabric	1000D low wick polyester
Fabric Density	8 x 8 yarns per cm ²
Finish	Glossy, both sides PVDF lacquer
Treatment	Bochini: Weldable PVDF lacquer on both sides Bochini Blockout: Weldable PVDF lacquer one side Both are fungicide treated and anti-mildew treated
Tensile Strength	Warp: 2300N/50mm, Weft: 2300N/50mm
Adhesion	100N/50mm
Elongation at Break	Warp: 22%, Weft: 22%
Tear Strength	Warp: 230N, Weft: 230N

COOLSHADE

COMMERCIAL GRADE SHADE CLOTH

For shade sails, shade structures & tensioned structures





COOLSHADE



COMMERCIAL SHADE CLOTH ENGINEERED TO LAST

Coolshade by Ricky is a heavy-duty commercial grade shade cloth that delivers ultra-violet (UV) protection and is engineered to last under the harsh Australian elements. The contemporary colour palette is available in multiple fabric widths for versatility. Coolshade is supported with a 12-year warranty for peace of mind. Typical environments include; schools & daycare centres, parks & playgrounds, carparks and most shade sails and structures.

12

12-YEAR UV WARRANTY

Coolshade is supported by a full 12-year UV degradation warranty across the range.



HIGH UVR PROTECTION

Up to 97% UVR block across the Coolshade range of colours.



MOULD & MILDEW RESISTANT

Coolshade thrives in all elements and environments. Manufactured to last and stand the test of time.



HEAT SET

Thermal process that reduces shrinkage once installed and allows for easier fabrication of the product.



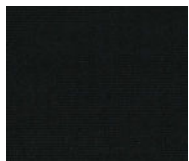
100% RECYCLABLE

Coolshade is a fully recyclable product that will not rot over time.

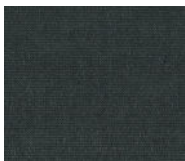


Ricky shade fabrics are proudly endorsed by the Australian Skin Cancer Foundation. Our high-quality shade fabrics combine durability and UV resistance to ensure lasting protection from the elements.

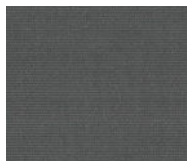
COLOUR RANGE



BLACK



DARK CHARCOAL



SLATE



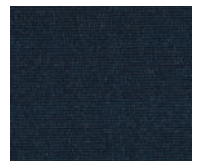
SILVER



DARK GREEN



MAIZE



MIDNIGHT



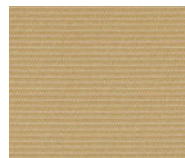
AQUA BLUE



RED



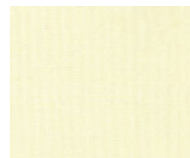
MANOR RED



SAND



CAPPUCCINO
















IVORY

Black, Dark Charcoal, Slate, Dark Green, Midnight, and Aqua Blue are available in 380cm and 300cm roll widths. Silver, Maize, Red, Manor Red, Sand, Cappuccino, and Ivory are available in 380cm roll width only.



COLOUR SPECIFICATIONS

Colour	UVR Block %	Cover Factor %	Shade Factor %	UVE %	Category
 Black	96.8	96.0	96.7	96.0	Most Effective
 Dark Charcoal	94.1	94.0	93.1	92.0	Very Effective
 Slate	89.9	90.0	87.3	89.0	Effective
 Silver	84.8	84.0	84.4	84.0	Effective
 Dark Green	92.3	92.0	88.6	92.0	Very Effective
 Maize	90.6	90.0	83.8	90.0	Effective
 Midnight	93.1	93.0	91.5	92.0	Very Effective
 Aqua Blue	92.9	94.0	86.0	93.0	Very Effective
 Red	93.8	93.0	83.6	94.0	Very Effective
 Manor Red	92.4	92.0	88.2	92.0	Very Effective
 Sand	87.8	88.0	78.1	87.0	Effective
 Cappuccino	92.8	93.0	84.8	92.0	Very Effective
 Ivory	91.5	92.0	71.0	92.0	Very Effective

TECHNICAL SPECIFICATIONS

Roll Widths	380cm & 300cm	Roll Length	50m
Nominal Weight	325gsm	Fabric Type	HDPE monofilament and tape
Breaking Force (AS2001.2.3.1-2001)	Warp: 770N/50mm Weft: 2000N/50mm	Elongation at Break (AS2001.2.3.1-2001)	Warp: 108% Weft: 74%
Tear Resistance (AS2001.2.10-1986)	Warp: 213N Weft: 248N	Bursting Force (AS2001.2.19-1988) Ball Burst Method	1869N

FIRE RETARDANCY

AS1503.2-1993 (Flammability of Materials)	Flammability Index:	10		
AS1503.3-1999	Spread of Flame:	8	AS1503.3-1999	Ignitability: 11
AS1503.3-1999	Smoke Developed:	5	AS1503.3-1999	Heat Evolved: 6

FERROSHADE

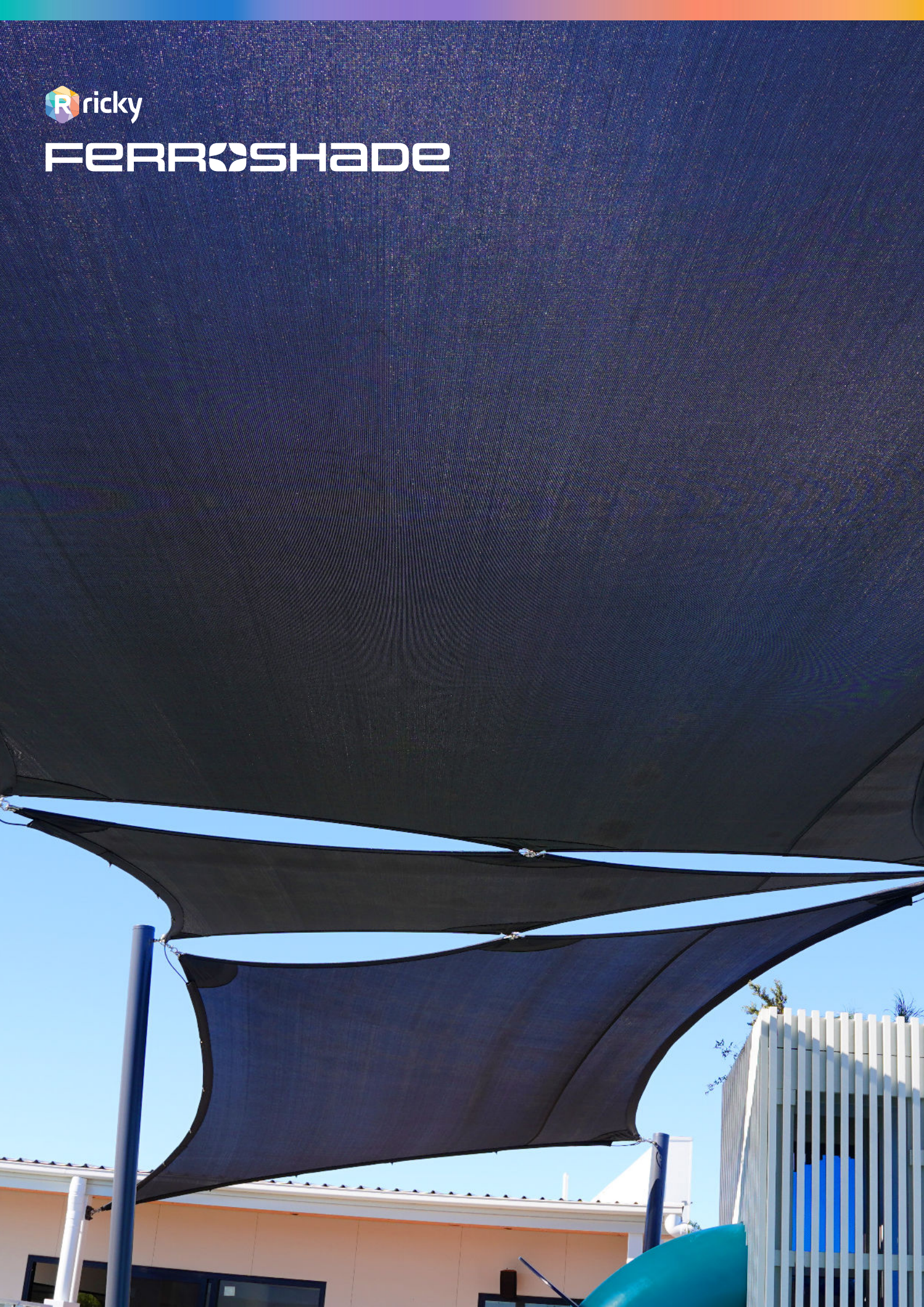
100% HDPE MONOFILAMENT YARN

For car park structures, shade sails, playgrounds, schools & sports complexes





FERROSHADE



PERFORMANCE FOR LARGE SHADE STRUCTURES

Ferroshade is a performance knitted shade cloth, manufactured with 100% HDPE monofilament yarn. Engineered for large sails and structures, Ferroshade combines strength and UV protection for a wide variety of applications including playgrounds, schools, car parks, sports complexes, and truck tarpaulins.



15-YEAR WARRANTY

Ferroshade is supported with a 15-year UV warranty for peace of mind.



UVR PROTECTION

The Ferroshade range significantly reduces ultra-violet radiation (UVR) and is formally classified as 'effective' protection.



HIGH STRENGTH

Ferroshade is engineered to perform in large shade sails and structures.



HEAT SET

Ferroshade is heat set providing dimensional stability and excellent lay-flat characteristics.



MOULD & MILDEW RESISTANT

To support ease of maintenance, Ferroshade is resistant to mould and mildew.



100% RECYCLABLE

Ferroshade is manufactured using 100% polyethylene which can be recycled.











INSPIRED BY COLORBOND®

The Ferroshade colour range combines a traditional and contemporary colour palette. A selection of colours are inspired by Colorbond®.



Ricky shade fabrics are proudly endorsed by the Australian Skin Cancer Foundation. Our high-quality shade fabrics combine durability and UV resistance to ensure lasting protection from the elements.

COLOUR SPECIFICATIONS

Colour	UVR Block %	Cover Factor %	Shade Factor %	UVE %	Category
 Night Sky®	86.3	86.0	86.4	85.0	Effective
 Charcoal	84.5	84.0	84.3	83.0	Effective
 Pewter	86.2	86.0	81.5	85.0	Effective
 Navy	83.4	83.0	82.4	82.0	Effective
 Royal Blue	83.1	84.0	78.9	83.0	Effective
 Amazon	85.7	85.0	83.3	84.0	Effective
 Desert	84.1	84.0	71.1	82.0	Effective
 Classic Cream™	83.0	83.0	66.2	83.0	Effective

COLOUR RANGE

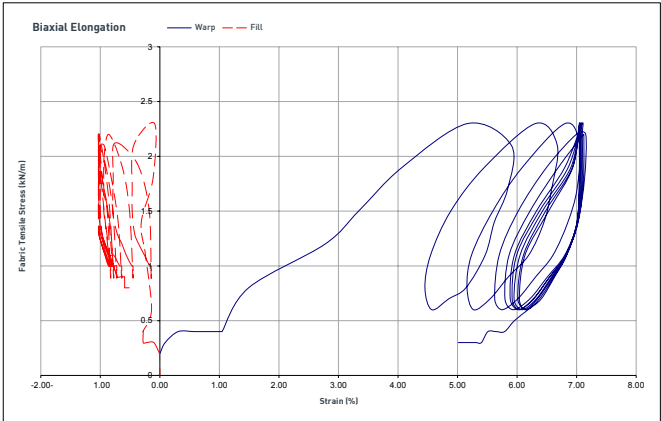


*Inspired by COLORBOND®

TECHNICAL SPECIFICATIONS

Roll Widths	380cm, (all colours), 300cm (Night Sky only)		
Roll Length	50m		
Nominal Weight	380gsm	Fabric Type	100% HDPE monofilament yarn
Breaking Force (AS2001.2.3.1-2001)	Warp: 1450N/50mm Weft: 1908N/50mm	Elongation at Break (AS2001.2.3.1-2001)	Warp: 94% Weft: 82%
Tear Resistance (AS2001.2.10-1986)	Warp: 194N Weft: 275N	Bursting Force (AS2001.2.19-1988)	2164N

BIAXIAL DATA



FIRE RETARDANCY

AS1503.2-1993 (Flammability of Materials)	Flammability Index:	12
AS1503.3-1999	Spread of Flame:	8
AS1503.3-1999	Ignitability:	14
AS1503.3-1999	Smoke Developed:	4
AS1503.3-1999	Heat Evolved:	4



FLUO²MAX

TENSILE ARCHITECTURE MEMBRANE

For lightweight tensioned structures, marquees, tents, car park structures & umbrellas





FLUO²MAX



NEXT-GENERATION MEMBRANE DESIGNED FOR HIGH DURABILITY & PERFORMANCE

Fluo²Max membranes are the next-generation high durability range that offers the best performance possible in tensile architecture. The TiO₂ prime coat acts as a protective barrier that improves resistance to UV degradation, helping extend the life and appearance of the membrane under Australia's intense sun. On top of that, the range is lacquered with a PVDF topcoat on both sides. Fluo²Max is available in strength classes Type 1 & 2.



20-YEAR UV WARRANTY

Fluo²Max Type 1 and Type 2 are supported by a 20-year UV degradation warranty.



UV RESISTANT

Fluo²Max membranes are UV treated, ensuring their suitability for harsh UV conditions.



FLAME RETARDANT

Fluo²Max is fire retardant which means the fabrics are designed for commercial environments. Test results are available by request.



ANTI-BACTERIAL

The Fluo²Max range is made with anti-bacterial treatment to support its durability.



LOW-WICK

Fluo²Max contains a low-wick treatment to prevent unsightly mould developing.



DIRECT HF WELDABILITY

Fluo²Max allows for direct high frequency welding, eliminating the need for surface grinding.



MADE BY SIOEN

Fluo²Max is manufactured by textile pioneer Sioen in Europe.

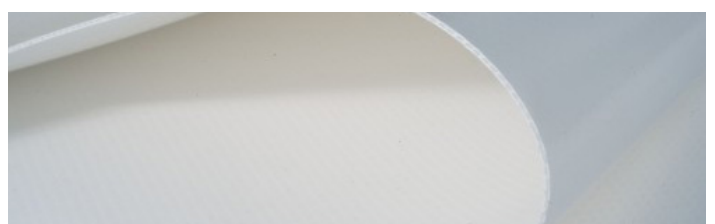


Ricky shade fabrics are proudly endorsed by the Australian Skin Cancer Foundation. Our high-quality shade fabrics combine durability and UV resistance to ensure lasting protection from the elements.

RANGE



9922 WHITE – FLUO²MAX TYPE 1



9922 WHITE – FLUO²MAX TYPE 2

TYPE 1 TECHNICAL SPECIFICATIONS

Roll Size	300cm (width) x 100m (length)
Nominal Weight	725gsm
Fabric Type	1100dtex polyester
Finish	Top: Titanium PVC Fluomax, Bottom: PVDF Fluomax (Glossy)
Treatment	TiO2 and PVDF surface treatment, fire retardant
Breaking Strength	Warp: 3000N/50mm, Weft: 3000N/50mm
Tear Strength	Warp: 300N, Weft: 300N
Adhesion	100N/50mm

TYPE 2 TECHNICAL SPECIFICATIONS

Roll Size	300cm (width) x 100m (length)
Nominal Weight	900gsm
Fabric Type	1100dtex polyester
Finish	Top: Titanium PVC Fluomax, Bottom: PVDF Fluomax (Glossy)
Treatment	TiO2 and PVDF surface treatment, fire retardant
Breaking Strength	Warp: 4300N/50mm, Weft: 4200N/50mm
Tear Strength	Warp: 600N, Weft: 500N
Adhesion	120N/50mm





Ricky shade fabrics are proudly endorsed by the Australian Skin Cancer Foundation. Our high-quality shade fabrics combine durability and UV resistance to ensure lasting protection from the elements.



Ricky Richards (Sales) Pty. Ltd | ABN 18 000 946 725
1300 RICKYS (1300 742 597)
sales@rickyrichards.com.au
rickyrichards.com.au

JANUARY 2026

Information contained in this brochure is accurate and based on the latest product information available at the time. Please be aware that a slight colour difference may occur when using different online devices or when printed.

While Ricky Richards (Sales) P/L makes all efforts to provide accurate information, we maintain the right to make changes as necessary.



EXPLORE
OUR SHADE
RANGE