



OUTLOOK[®]

ANYTHING ELSE IS A COMPROMISE

EXTERIOR BLINDS

AWNINGS



15

YEAR UV
WARRANTY

ANYTHING ELSE IS A COMPROMISE

For decades Outlook has been Australia's market leading outdoor mesh and with good reason. The Outlook Collection is the most comprehensive available with a combination of modern and contemporary colours in a variety of textures and qualities. Through constant development and innovation, the Outlook Collection delivers performance and functionality like no other.

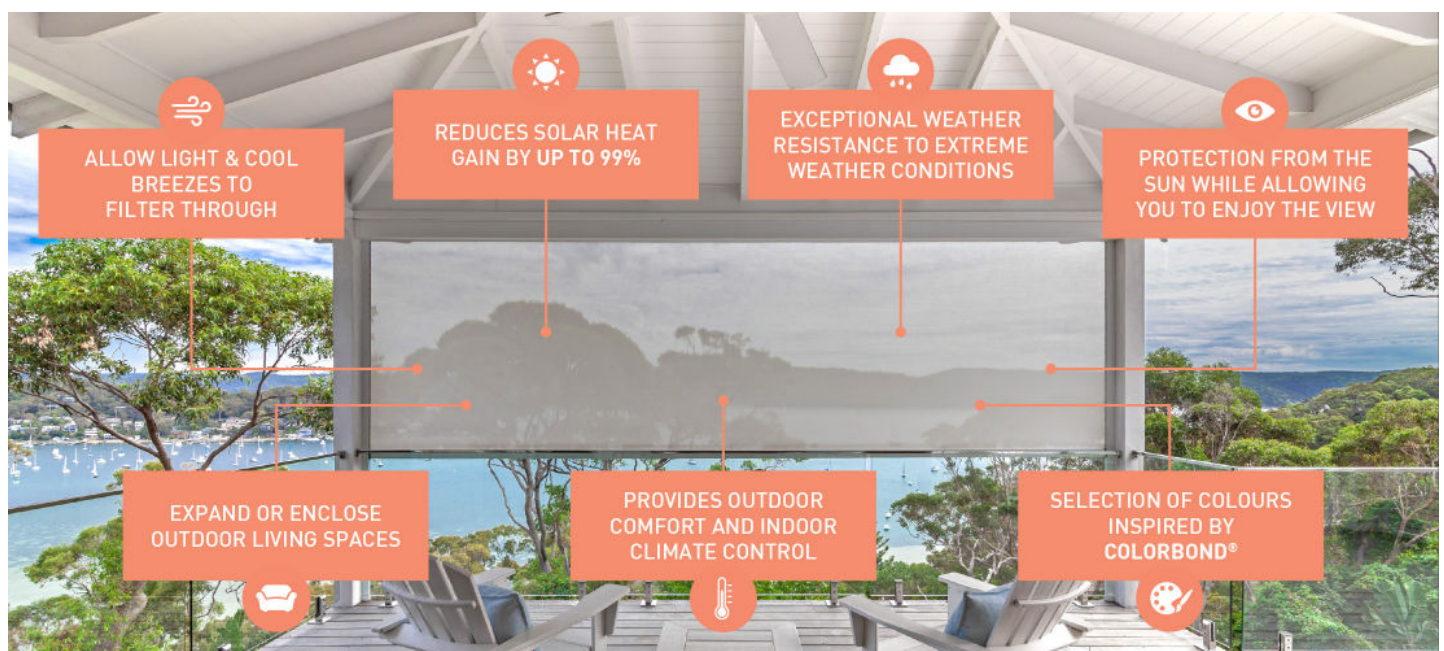


Outlook is manufactured by the American based global leader of solar control fabrics, Phifer Incorporated. Manufactured using stringent quality control systems and the latest technology, Outlook is the benchmark for outdoor mesh in Australia. Innovation is in the Phifer DNA with industry leading initiatives such as Dow Ecolibrium and Microban.

- Blind and awning systems using Outlook mesh will extend outdoor areas for all year-round living, maintaining temperature control and providing a seamless connection for indoor and outdoor environments.
- Outlook filters ultra-violet rays, offering protection without compromising the visual aspect.
- Manufactured using the bio-based Dow Ecolibrium plasticiser technology, using Outlook will save on average one litre of a petroleum for each outdoor blind.
- Outlook fabrics are designed for commercial environments and are tested to the relevant Australian standards.
- Outlook mesh naturally creates a cooler environment outside, and assists with lowering energy costs inside.

OUR MARKET-LEADING RANGE

DESIGNS	COLOURS & TEXTURES	PRIVACY	ZERO
12% Openness	5% Openness	1% Openness	100% Visual Block-out



THE OUTLOOK ADVANTAGE



15-YEAR UV WARRANTY

Outlook is a proven performer and is supported with an industry-leading 15-year UV warranty.



GREENGUARD GOLD® CERTIFIED

Outlook is engineered with environmental responsibility as one of its key criteria. The lead and phthalate-free formulation provides low emissions and is Gold Level certified by Greenguard.



MICROBAN® TECHNOLOGY

Outlook fabrics include Microban anti-microbial technology. This provides ease of maintenance by inhibiting mould and mildew growth.



DOW® ECOLIBRIUM™ BIO-BASED PLASTICISER TECHNOLOGY

Outlook features the exclusive bio-based Dow Ecolibrium plasticiser technology which reduces greenhouse gases by 40%. Dow Ecolibrium preserves the equivalent of 1 litre of oil for every 10 square metres of fabric compared to petroleum-based equivalents.



FIRE RETARDANT

Outlook fabrics are designed for commercial environments and are tested to the relevant Australian standards. (Not including Outlook Designs)



DURABLE & EASY TO MAINTAIN

The Outlook collection is as durable as it is stylish and is designed to handle high traffic applications with ease. Outlook mesh is easy to maintain and only requires occasional cleaning using a mild detergent then rinsing with clean water. Comprehensive care details are available on the Ricky Richards website or by request from Ricky Richards (Sales) P/L.



INSPIRED BY COLORBOND®

Selection of colours throughout the Outlook collection are inspired by Colorbond® matching any existing outdoor theme.



LEAD-FREE

Outlook fabrics manufactured by Phifer Incorporated are lead-free. These fabrics pass some of the most stringent US standards for heavy metals such as US Product Safety Commission Section 101 and ANSI/WCMA A100.1-2007 for lead content.



PRINTABLE

Mode Colours, Outlook Privacy and Outlook Zero colours are printable fabrics and have the printing compatibility for Solvent and UV printers.

APPLICATIONS

EXTERNAL
BLINDS

PIVOT ARM
AWNINGS

LOCK ARM
AWNINGS

SLIDING SHADE
SYSTEMS



OUTLOOK® COLOURS

One of the most versatile products of the Outlook mesh collection with a 'do it all' reputation. The construction features a 5% openness allowing for sun and weather protection, moderate airflow and uninterrupted views.



*Inspired by COLORBOND®

TECHNICAL SPECIFICATIONS

Roll Widths	275cm & 320cm	Roll Length	30m
Nominal Weight	540gsm	Fabric Type	2 x 2 weave, PVC coated polyester mesh
Tensile Strength (AS2001.2.3.1-2001)	Warp: 3225N/50mm Weft: 2180N/50mm	Elongation at Break	Warp: 29% Weft: 26%
Wing Rip (AS2001.2.10-1986)	Warp: 161N Weft: 119N		

OUTLOOK® TEXTURES

Outlook Textures is a versatile product, with a 5% openness allowing for sun and weather protection, moderate airflow and uninterrupted views.



907 ANISEED



909 STUCCO



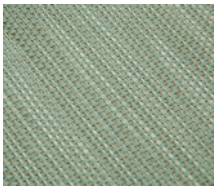
901 GOLDEN GLOW



903 SMOKEY QUARTZ



900 MILKY TOPAZ



905 PEPPERMINT

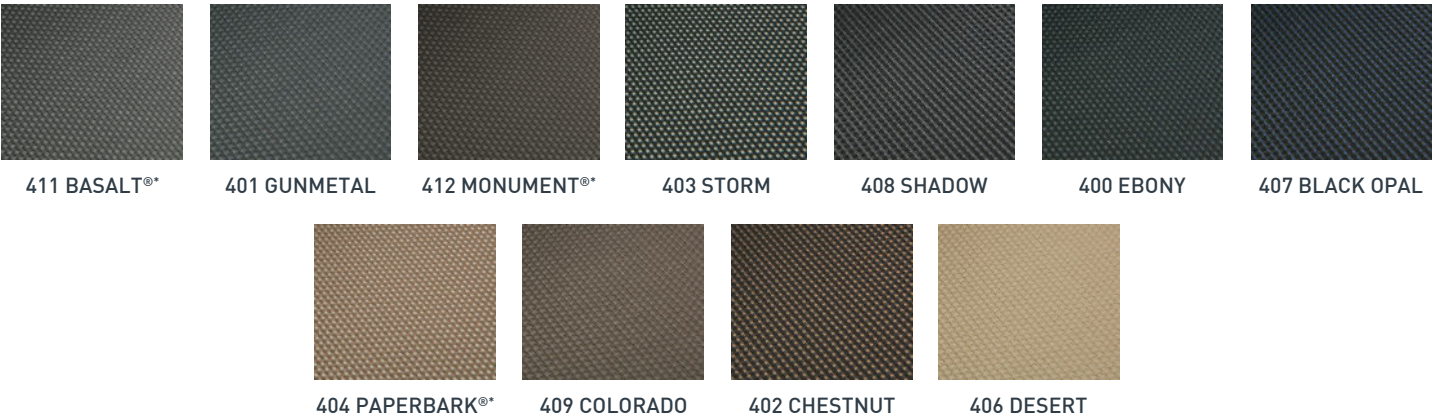
TECHNICAL SPECIFICATIONS

Roll Width	320cm	Roll Length	30m
Nominal Weight	540gsm	Fabric Type	2 x 2 weave, PVC coated polyester mesh & bi-colour yarn
Tensile Strength (AS2001.2.3.1-2001)	Warp: 3225N/50mm Weft: 2180N/50mm	Elongation at Break	Warp: 29% Weft: 26%
Wing Rip (AS2001.2.10-1986)	Warp: 161N Weft: 119N		



OUTLOOK® PRIVACY

Our Outlook Privacy mesh features a 1% openness, providing additional privacy and increased sun protection, while still maintaining moderate views.



*Inspired by COLORBOND®

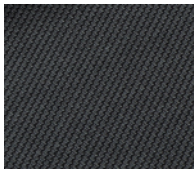
TECHNICAL SPECIFICATIONS

Roll Width	320cm	Roll Length	20m
Nominal Weight	650gsm	Fabric Type	2 x 2 weave, PVC coated polyester mesh
Tensile Strength (AS2001.2.3.1-2001)	Warp: 3772N/50mm Weft: 1409N/50mm	Elongation at Break	Warp: 32.6% Weft: 16.1%
Wing Rip (AS2001.2.10-1986)	Warp: 234N Weft: 122N		

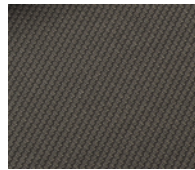


OUTLOOK® ZERO & ZERO STRIPES

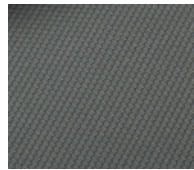
The Outlook Zero range offers a selection of contemporary solid and stripe colourways. This range is a 100% visual block-out mesh, providing exceptional weather protection and total privacy.



553 BLACKSTONE



542 MONUMENT®*



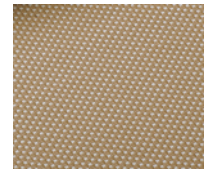
541 BASALT®*



564 PLATINUM



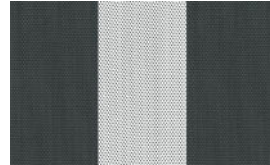
517 CHALK



566 ALPACA



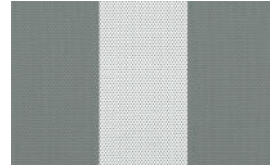
553 BLACKSTONE / CHALK



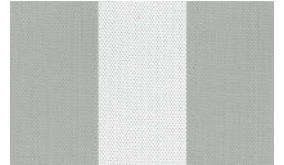
542 MONUMENT®* / CHALK



541 BASALT®* / CHALK



538 WINDSPRAY® / CHALK



539 SHALE GREY™** / CHALK



502 SURFMIST®* / CHALK

540 WOODLAND GREY®*
/ CHALK

504 SPICE / CHALK

580 PALE EUCALYPT®* /
CHALK

*Inspired by COLORBOND®

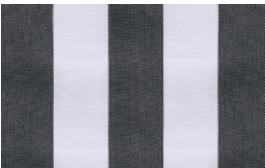
TECHNICAL SPECIFICATIONS

Roll Width	320cm	Roll Length	25m
Nominal Weight	650gsm	Fabric Type	2 x 2 weave, PVC coated polyester mesh
Tensile Strength (AS2001.2.3.1-2001)	Warp: 980N/50mm Weft: 3600N/50mm	Elongation at Break	Warp: 19.5% Weft: 34.5%
Wing Rip (AS2001.2.10-1986)	Warp: 581N Weft: 199N		



OUTLOOK® DESIGNS

Outlook Designs is a selection of traditional stripe in a 12% openness construction. It offers aesthetic appeal and general weather protection.



640 ZEBRA



644 NAMBUCCA



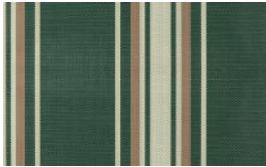
618 WANDA



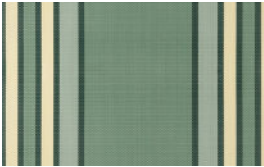
636 STRADBROKE



672 FEDERATION



648 DAINTREE



625 PALM BEACH



642 GUMLEAF

TECHNICAL SPECIFICATIONS

Roll Width	275cm	Roll Length	30m
Nominal Weight	490gsm	Fabric Type	2 x 1 weave, PVC coated polyester mesh
Tensile Strength (AS2001.2.3.1-2001)	Warp: 2675N/50mm Weft: 1145N/50mm	Elongation at Break	Warp: 28% Weft: 29%
Wing Rip (AS2001.2.10-1986)	Warp: 171N Weft: 103N		

ONLY OUTLOOK USES



Plasticisers give fabrics their pliability, or unique ability to bend and flex without cracking, breaking or holding memory. Fabrics made with Dow Ecolibrium bio-based plasticisers offer a renewable, plant-based alternative to those made with traditional petroleum-based plasticisers, lowering greenhouse gases by 40%. This technology also improves performance, offering the benefits of heat stability, durability, abrasion resistance and UV resistance.



Made from **98%** renewable materials



Phthalate and lead free



Produces lower carbon footprint

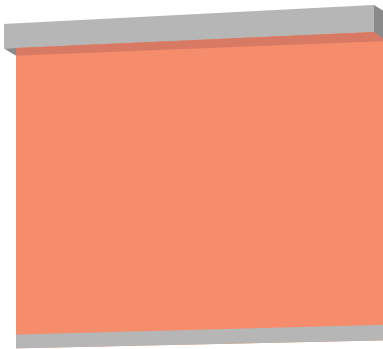


Durable and cleanable



Lowers greenhouse gases by **40%**

WHEN YOU USE OUTLOOK MESH, EACH STANDARD BLIND SAVES...



Up to **2kg** of CO₂ and **1L** of petrol*

*Calculated based on a standard blind being 10m²

THE AVERAGE HOME USING OUTLOOK SAVES...



Up to **12kg** of CO₂ and **6L** of petrol*

*Calculated based on a house with 6 x 10m² sized blinds



Ricky Richards (Sales) Pty. Ltd | ABN 18 000 946 725
1300 RICKYS (1300 742 597)
sales@rickyrichards.com.au
rickyrichards.com.au

JANUARY 2026

Information contained in this brochure is accurate and based on the latest product information available at the time. Please be aware that a slight colour difference may occur when using different online devices or when printed.

While Ricky Richards (Sales) P/L makes all efforts to provide accurate information, we maintain the right to make changes as necessary.



**EXPLORE
OUTLOOK®**