



OUTLOOK[®]

ANYTHING ELSE IS A COMPROMISE

EXTERIOR BLINDS

AWNINGS

SLIDING SHADE SYSTEMS



YEAR UV
WARRANTY

ANYTHING ELSE IS A COMPROMISE

For decades Outlook has been Australia's market leading outdoor mesh and with good reason. The Outlook Collection is the most comprehensive available with a combination of modern and contemporary colours in a variety of textures and qualities. Through constant development and innovation, the Outlook Collection delivers performance and functionality like no other.



Outlook is manufactured by the American based global leader of solar control fabrics, Phifer Incorporated. Manufactured using stringent quality control systems and the latest technology, Outlook is the benchmark for outdoor mesh in Australia. Innovation is in the Phifer DNA with industry leading initiatives such as Dow Ecolibrium and Microban.

- Blind and awning systems using Outlook mesh will extend outdoor areas for all year-round living, maintaining temperature control and providing a seamless connection for indoor and outdoor environments.
- Outlook filters ultra-violet rays, offering protection without compromising the visual aspect.
- Manufactured using the bio-based Dow Ecolibrium plasticiser technology, using Outlook will save on average one litre of a petroleum for each outdoor blind.
- Outlook fabrics are designed for commercial environments and are tested to the relevant Australian standards.
- Outlook mesh naturally creates a cooler environment outside, and assists with lowering energy costs inside.

OUR MARKET-LEADING RANGE

DESIGNS 12% Openness	MODE COLOURS & TEXTURES 5% Openness	PRIVACY 1% Openness	ZERO 100% Visual Block-out



THE OUTLOOK ADVANTAGE

15

15-YEAR UV WARRANTY

Outlook is a proven performer and is supported with an industry-leading 15-year UV warranty.



GREENGUARD GOLD® CERTIFIED

Outlook is engineered with environmental responsibility as one of its key criteria. The lead and phthalate-free formulation provides low emissions and is Gold Level certified by Greenguard.



MICROBAN® TECHNOLOGY

Outlook fabrics include Microban anti-microbial technology. This provides ease of maintenance by inhibiting mould and mildew growth.



DOW® ECOLIBRIUM™ BIO-BASED PLASTICISER TECHNOLOGY

Outlook features the exclusive bio-based Dow Ecolibrium plasticiser technology which reduces greenhouse gases by 40%. Dow Ecolibrium preserves the equivalent of 1 litre of oil for every 10 square metres of fabric compared to petroleum-based equivalents.



FIRE RETARDANT

Outlook fabrics are designed for commercial environments and are tested to the relevant Australian standards. (Not including Outlook Designs)



DURABLE & EASY TO MAINTAIN

The Outlook collection is as durable as it is stylish and is designed to handle high traffic applications with ease. Outlook mesh is easy to maintain and only requires occasional cleaning using a mild detergent then rinsing with clean water. Comprehensive care details are available on the Ricky Richards website or by request from Ricky Richards (Sales) P/L.



INSPIRED BY COLORBOND®

A selection of colours throughout the Outlook collection are inspired by COLORBOND® matching any existing outdoor theme.



LEAD-FREE

Outlook fabrics manufactured by Phifer Incorporated are lead-free. These fabrics pass some of the most stringent US standards for heavy metals such as US Product Safety Commission Section 101 and ANSI/WCMA A100.1-2007 for lead content.



PRINTABLE

Mode Colours, Outlook Privacy and Outlook Zero colours are printable fabrics and have the printing compatibility for Solvent and UV printers.

APPLICATIONS

EXTERNAL
BLINDS



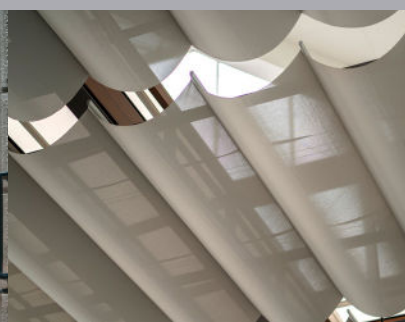
PIVOT ARM
AWNINGS



LOCK ARM
AWNINGS



SLIDING SHADE
SYSTEMS



OUTLOOK® MODE COLOURS 95% SHADE COVER, 5% OPENNESS

One of the most versatile products of the Outlook mesh collection with a 'do it all' reputation. The construction features a 5% openness allowing for sun and weather protection, moderate airflow and uninterrupted views. Australia's number one selling outdoor mesh range.



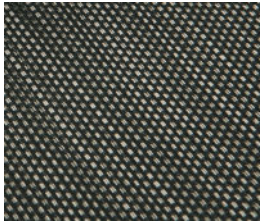
*Inspired by COLORBOND®

TECHNICAL SPECIFICATIONS

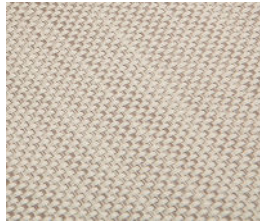
Roll Widths	275cm & 320cm	Roll Length	30m
Shade Cover	95%	Openness	5%
Nominal Weight	540gsm	Fabric Type	2 x 2 weave, PVC coated polyester mesh
Tensile Strength (AS2001.2.3.1-2001)	Warp: 3225N/50mm Weft: 2180N/50mm	Elongation at Break	Warp: 29% Weft: 26%
Wing Rip (AS2001.2.10-1986)	Warp: 161N Weft: 119N		

OUTLOOK® TEXTURES 95% SHADE COVER, 5% OPENNESS

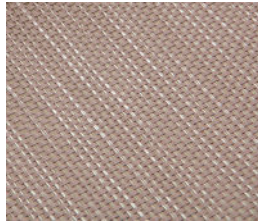
Outlook Textures is a versatile product, with a 5% openness allowing for sun and weather protection, moderate airflow and uninterrupted views.



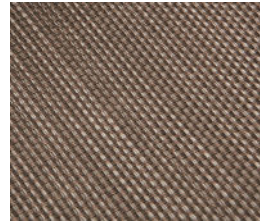
907 ANISEED



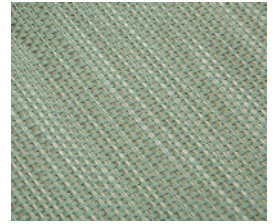
909 STUCCO



901 GOLDEN GLOW



903 SMOKEY QUARTZ



905 PEPPERMINT

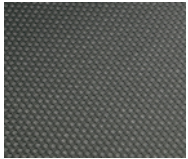
TECHNICAL SPECIFICATIONS

Roll Width	320cm	Roll Length	30m
Shade Cover	95%	Openness	5%
Nominal Weight	540gsm	Fabric Type	2 x 2 weave, PVC coated polyester mesh & bi-colour yarn
Tensile Strength (AS2001.2.3.1-2001)	Warp: 3225N/50mm Weft: 2180N/50mm	Elongation at Break	Warp: 29% Weft: 26%
Wing Rip (AS2001.2.10-1986)	Warp: 161N Weft: 119N		

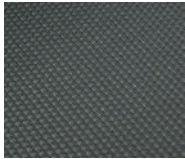


OUTLOOK® PRIVACY 99% SHADE COVER, 1% OPENNESS

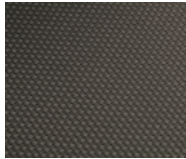
Our Outlook Privacy mesh features a 1% openness, providing additional privacy and increased sun protection, while still maintaining moderate views.



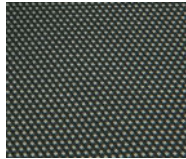
411 BASALT*



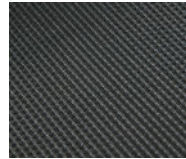
401 GUNMETAL



412 MONUMENT*



403 STORM



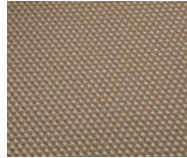
408 SHADOW



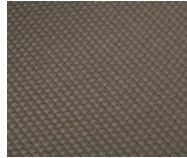
400 EBONY



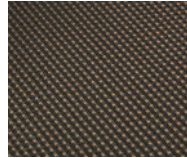
407 BLACK OPAL



404 PAPERBARK*



409 COLORADO



402 CHESTNUT



406 DESERT

*Inspired by COLORBOND®

TECHNICAL SPECIFICATIONS

Roll Width	320cm	Roll Length	20m
Shade Cover	99%	Openness	1%
Nominal Weight	650gsm	Fabric Type	2 x 2 weave, PVC coated polyester mesh
Tensile Strength (AS2001.2.3.1-2001)	Warp: 3772N/50mm Weft: 1409N/50mm	Elongation at Break	Warp: 32.6% Weft: 16.1%
Wing Rip (AS2001.2.10-1986)	Warp: 234N Weft: 122N		



OUTLOOK® ZERO CLASSICS 100% VISUAL BLOCK-OUT

The Outlook Zero Classics range offers traditional stripe designs in a 0% openness, made with a black core yarn for enhanced light blocking capabilities.



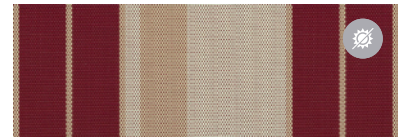
Colours marked with this icon are made with Dark-Night light-blocking technology.



603 FEDERATION



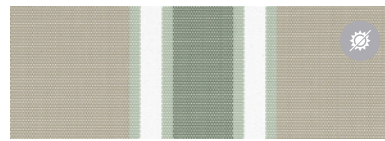
604 WANDA



600 MANOR



601 COUNTRY



602 ACACIA

TECHNICAL SPECIFICATIONS

Roll Size	320cm x 25m	Shade Cover	100%
Openness	0%	Nominal Weight	650gsm
Fabric Type	2 x 2 weave, PVC coated black polyester mesh	Tensile Strength (AS2001.2.3.1-2001)	Warp: 980N/50mm Weft: 3600N/50mm
Elongation at Break	Warp: 19.5% Weft: 34.5%	Wing Rip (AS2001.2.10-1986)	Warp: 58.1N Weft: 19.1N



OUTLOOK® ZERO & ZERO STRIPES 100% VISUAL BLOCK-OUT

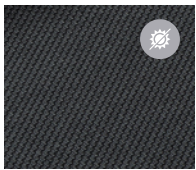
The Outlook Zero range offers a selection of contemporary solid and stripe colourways. This range is a 100% visual block-out mesh, providing exceptional weather protection and total privacy.



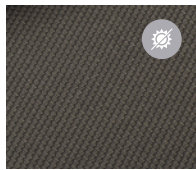
Colours marked with this icon are made with Dark-Night light-blocking technology.



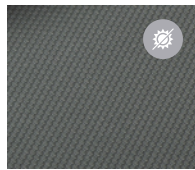
Colours marked with this icon are light filtering, but 100% visual blockout.



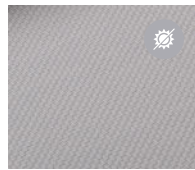
553 BLACKSTONE



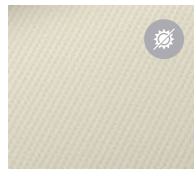
542 MONUMENT*



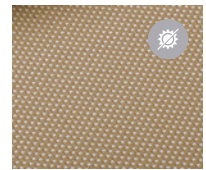
541 BASALT*



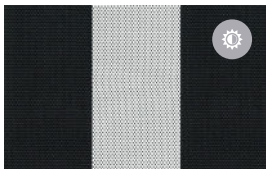
564 PLATINUM



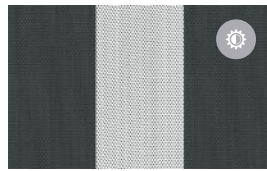
517 COOL WHITE



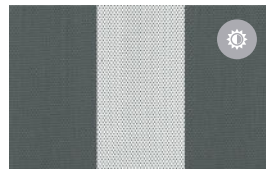
566 ALPACA



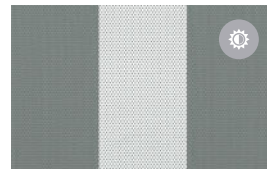
553 BLACKSTONE / CHALK



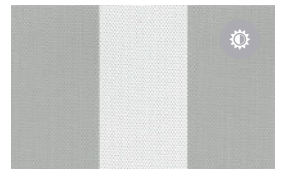
542 MONUMENT* / CHALK



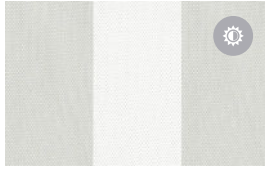
541 BASALT* / CHALK



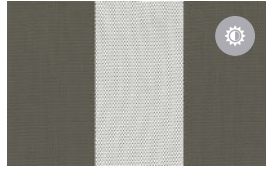
538 WINDSPRAY* / CHALK



539 SHALE GREY*** / CHALK



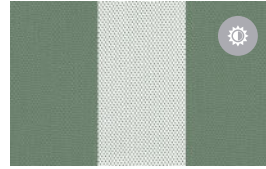
502 SURFMIST* / CHALK



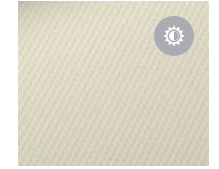
540 WOODLAND GREY* / CHALK



504 SPICE / CHALK



580 PALE EUCALYPT* / CHALK



517 CHALK (LIGHT-FILTERING)

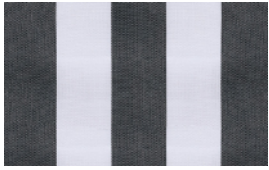
*Inspired by COLORBOND®

TECHNICAL SPECIFICATIONS

Roll Width	320cm	Roll Length	25m
Shade Cover	100%	Openness	0%
Nominal Weight	650gsm	Fabric Type	2 x 2 weave, PVC coated polyester mesh
Tensile Strength (AS2001.2.3.1-2001)	Warp: 980N/50mm Weft: 3600N/50mm	Elongation at Break	Warp: 19.5% Weft: 34.5%
Wing Rip (AS2001.2.10-1986)	Warp: 581N Weft: 199N		

OUTLOOK® DESIGNS 88% SHADE COVER, 12% OPENNESS

Outlook Designs is a selection of traditional stripe in a 12% openness construction. It offers aesthetic appeal and general weather protection.



640 ZEBRA



644 NAMBUCCA



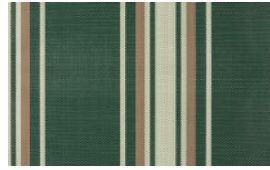
618 WANDA



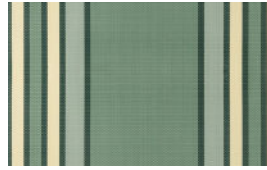
636 STRADBROKE



672 FEDERATION



648 DAINTREE



625 PALM BEACH



642 GUMLEAF

TECHNICAL SPECIFICATIONS






Roll Width	275cm	Roll Length	30m
Shade Cover	88%	Openness	12%
Nominal Weight	490gsm	Fabric Type	2 x 1 weave, PVC coated polyester mesh
Tensile Strength (AS2001.2.3.1-2001)	Warp: 2675N/50mm Weft: 1145N/50mm	Elongation at Break	Warp: 28% Weft: 29%
Wing Rip (AS2001.2.10-1986)	Warp: 171N Weft: 103N		



ONLY OUTLOOK USES



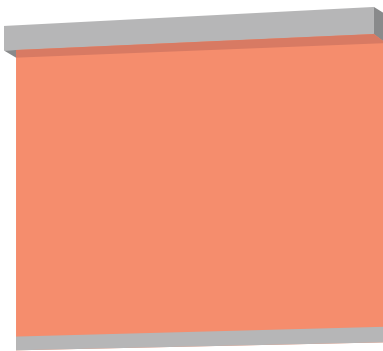
Plasticisers give fabrics their pliability, or unique ability to bend and flex without cracking, breaking or holding memory. Fabrics made with Dow Ecolibrium bio-based plasticisers offer a renewable, plant-based alternative to those made with traditional petroleum-based plasticisers, lowering greenhouse gases by 40%. This technology also improves performance, offering the benefits of heat stability, durability, abrasion resistance and UV resistance.

-  Made from **98%** renewable materials
-  Phthalate and lead free
-  Produces lower carbon footprint
-  Durable and cleanable
-  Lowers greenhouse gases by **40%**



WATCH OUR
VIDEO ON
DOW
ECOLIBRIUM
HERE

WHEN YOU USE OUTLOOK MESH, EACH STANDARD BLIND SAVES...



Up to **2kg** of CO₂ and **1L** of petrol*

*Calculated based on a standard blind being 10m²

THE AVERAGE HOME USING OUTLOOK SAVES...



Up to **12kg** of CO₂ and **6L** of petrol*

*Calculated based on a house with 6 x 10m² sized blinds

INSPIRED BY Colorbond®

A selection of colours throughout the Outlook collection are inspired by COLORBOND®, and are designed to complement any outdoor theme.

Monument®

A deep and dark grey, inspired by the volcanic formations of our Southern coastline.

Can be complemented by our colours:

Monument®, Surfmist®, Platinum, Shale Grey™



Basalt®

A cool grey inspired by the mineral tones of the ancient rock it represents.

Can be complemented by our colours:

Basalt®, Surfmist®, Platinum



Windspray®

A soft and neutral grey that evokes cool sea mists and summer breezes.

Can be complemented by our colours:

Windspray®, Chalk, Surfmist®



Shale Grey™

A light and delicate grey reflecting silvered tree bark and the engrained beauty of granite.

Can be complemented by our colours:

Shale Grey™, Chalk, Spice, Monument®



Surfmist®

A fresh and timeless colour inspired by the whitewash of surf beaches.

Can be complemented by our colours:

Surfmist®, Monument®, Woodland Grey®



Woodland Grey®

A dark, grey-green tone reminiscent of deep inland bush and coastal scrub.

Can be complemented by our colours:

Woodland Grey®, Surfmist®, Porcelain



Pale Eucalypt®

A versatile and calming colour recalling the green tones found in our native eucalypt species.

Can be complemented by our colours:

Pale Eucalypt®, Chalk, Surfmist®



OUTLOOK®

AUSTRALIA'S BEST MESH FOR EXTERNAL BLINDS

15

Backed by a 15-year
UV warranty

ecolibrium
BIO BASED PLASTICIZERS

The greenest mesh
on the market

PHIFER

Made by the world-
leader in outdoor mesh



Featuring Zero Stripes:
The only striped visual
block-out mesh on
the market



An extensive collection
of fabrics & colours





Ricky Richards (Sales) Pty. Ltd | ABN 18 000 946 725
1300 RICKYS (1300 742 597)
sales@rickyrichards.com.au
rickyrichards.com.au

JUNE 2026

Information contained in this brochure is accurate and based on the latest product information available at the time. Please be aware that a slight colour difference may occur when using different online devices or when printed.

While Ricky Richards (Sales) P/L makes all efforts to provide accurate information, we maintain the right to make changes as necessary.



**EXPLORE
OUTLOOK®**