



# NEPTUNE

SOLUTION-DYED ACRYLIC

BOAT COVERS

BIMINIS

SPRAY DODGERS

UMBRELLAS



YEAR UV  
WARRANTY



# FOR MARINE APPLICATIONS THAT REQUIRE TEXTILES TO PERFORM UNDER PRESSURE

Ensure smooth sailing with Neptune, our European designed and crafted solution-dyed acrylic.

With exceptional durability, UV stability, mould and mildew resistance, Neptune is easy to maintain and will exceed expectations. This collection features a modern marine colour palette in two qualities: Neptune is finished with a premium water repellency treatment, while Neptune Extra has the added benefit of a high-performing waterproof acrylic backing.



## SOLUTION-DYED ACRYLIC

Neptune is manufactured with solution-dyed acrylic yarn. This technology provides exceptional colour stability and performance under harsh Australian elements. Using the solution dyeing method, the colour becomes an integral part of the yarn through to the core which means Neptune fabrics are some of the most colourfast in the textile industry.



## UV STABILISED

Neptune fabrics are UV stabilised which prevents them from fading under intense UV rays. It also increases the textiles' longevity and ensures easy cleaning.



## WATER RESISTANT / WATERPROOF

Neptune is finished with a premium water repellent treatment, which also provides easy cleaning while Neptune Extra has the added benefit of a high performing waterproof coated backing.



## MOULD & MILDEW RESISTANT

Neptune textiles have been finished with a treatment that provides ease of maintenance by inhibiting mould and mildew growth. It also improves the textiles' longevity and makes for easy cleaning.



## 10-YEAR UV WARRANTY

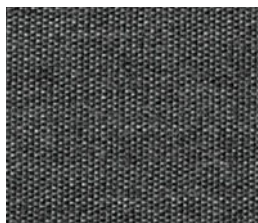
Neptune is a high-performing fabric that is supported with a 10-year warranty. Comprehensive care details are available from Ricky Richards by request.

## COLOUR RANGE

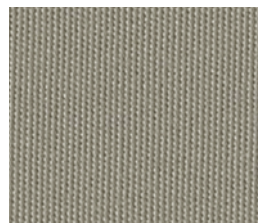
This collection contains core colourways in two finishes: Neptune is finished with a premium water repellent treatment, while Neptune Extra has the added benefit of a high-performing, waterproof acrylic backing.



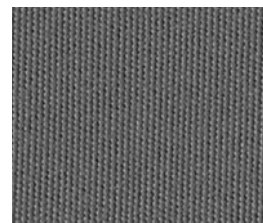
STONE



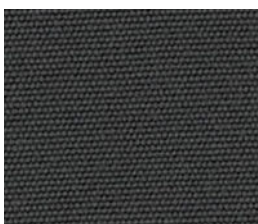
LUNAR



GREY



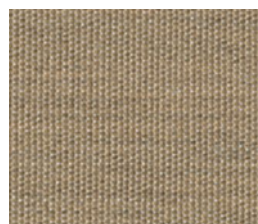
BASALT



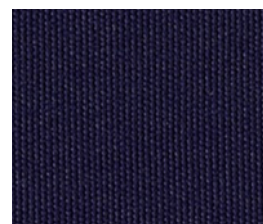
ANTHRACITE



BLACK



TERRA



NAVY



TECHNICAL SPECIFICATIONS

|                                       | NEPTUNE                             | NEPTUNE <sup>EXTRA</sup>            |
|---------------------------------------|-------------------------------------|-------------------------------------|
| Roll Width                            | 205cm, 240cm*                       | 205cm                               |
| Roll Length                           | 40m                                 | 40m                                 |
| Nominal Weight                        | 295gsm                              | 330gsm                              |
| Treatment                             | Water-resistant                     | Waterproof                          |
| Tensile Strength<br>(EN ISO 13934-1)  | Warp: 1400N/50mm<br>Weft: 850N/50mm | Warp: 1500N/50mm<br>Weft: 950N/50mm |
| Tensile Strength<br>(UNE-EN 20811)    | 35cm                                | 100+cm                              |
| UV Light Fastness<br>(EN ISO 105-B02) | 7-8                                 | 7-8                                 |

\*240cm Neptune is available in Black and Anthracite only.



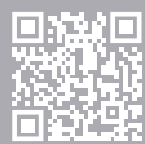


**Ricky Richards (Sales) Pty. Ltd | ABN 18 000 946 725**  
1300 RICKYS (1300 742 597)  
[sales@rickyrichards.com.au](mailto:sales@rickyrichards.com.au)  
[rickyrichards.com.au](http://rickyrichards.com.au)

**JANUARY 2026**

Information contained in this brochure is accurate and based on the latest product information available at the time.  
Please be aware that a slight colour difference may occur when using different online devices or when printed.

While Ricky Richards (Sales) P/L makes all efforts to provide accurate information,  
we maintain the right to make changes as necessary.



EXPLORE  
NEPTUNE



EXPLORE  
NEPTUNE  
EXTRA