

BLINDS & AWNINGS RANGE

Featuring

Outlook®

Docril®

Skyline



EXPLORE
OUR BLINDS
& AWNINGS
RANGE

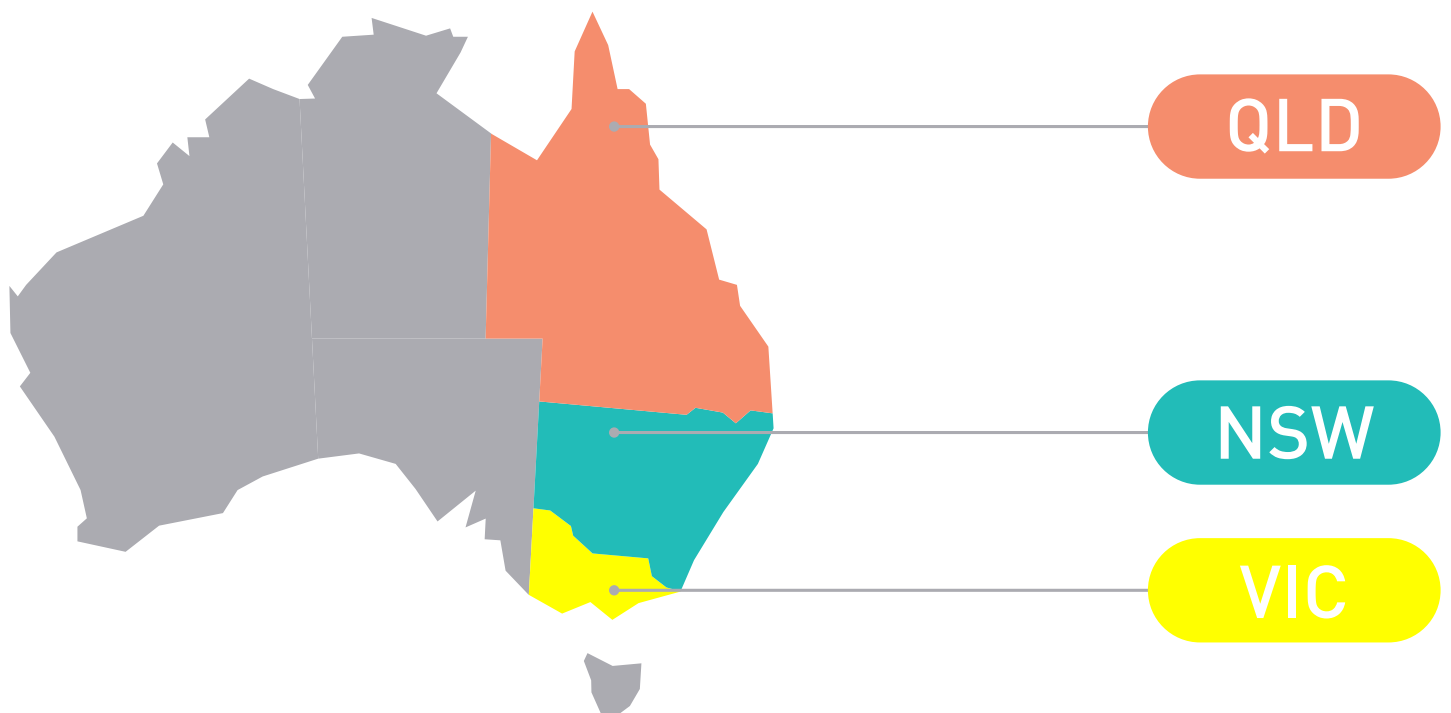
You can rely on Ricky

Expert Customer Service

Speedy & Reliable Delivery

High-Quality Product Range

With offices in:



Our Divisions



Sun
Control



Technical
Textiles



Print
Media



Blinds & Awnings

Our Blinds & Awnings range brings together high-performance fabrics engineered for long-lasting outdoor comfort and visual appeal. Fabricators benefit from easy handling, predictable tensioning and dependable warranties, while end-users enjoy enhanced shade, privacy and temperature control. Built for Australia's climate, these fabrics combine performance, protection and timeless design.

OUTLOOK®

ANYTHING ELSE IS A COMPROMISE

Mesh for external blinds & awnings



15-year UV warranty



6 expansive collections



Made with Dow® Ecolibrium™ technology



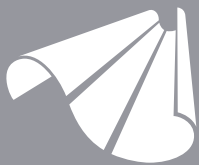
Greenguard Gold® certified



Made by Phifer



Featuring the Zero Stripes collection



Docril®
solution dyed acrylic

IF IT'S NOT DOCRIL, IT'S JUST FABRIC!

100% solution-dyed acrylic for awnings, exterior blinds, umbrellas & outdoor furniture



10-year UV warranty



100% solution-dyed acrylic



UV stabilised



SKYLINE

PANORAMIC VIEWS, EFFORTLESS COMFORT

Mesh for external blinds & sliding shade systems



10-year UV warranty



Greenguard Gold® certified



Fire retardant



Mould & mildew resistant



OUTLOOK[®]

ANYTHING ELSE IS A COMPROMISE

Mesh for exterior blinds & awnings



ANYTHING ELSE IS A COMPROMISE

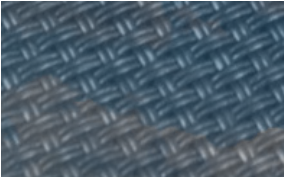
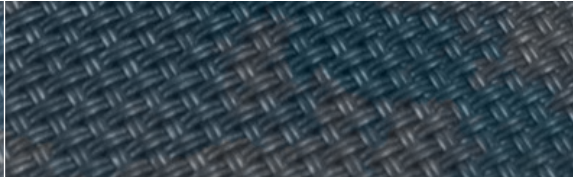

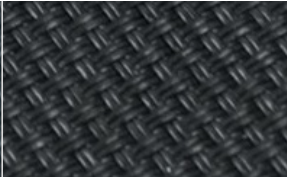
For decades Outlook has been Australia's market leading outdoor mesh and with good reason. The Outlook Collection is the most comprehensive available with a combination of modern and contemporary colours in a variety of textures and qualities. Through constant development and innovation, the Outlook Collection delivers performance and functionality like no other.



Outlook is manufactured by the American based global leader of solar control fabrics, Phifer Incorporated. Manufactured using stringent quality control systems and the latest technology, Outlook is the benchmark for outdoor mesh in Australia. Innovation is in the Phifer DNA with industry leading initiatives such as Dow Ecolibrium and Microban.

- Blind and awning systems using Outlook mesh will extend outdoor areas for all year-round living, maintaining temperature control and providing a seamless connection for indoor and outdoor environments.
- Outlook filters ultra-violet rays, offering protection without compromising the visual aspect.
- Manufactured using the bio-based Dow Ecolibrium plasticiser technology, using Outlook will save on average one litre of a petroleum for each outdoor blind.
- Outlook fabrics are designed for commercial environments and are tested to the relevant Australian standards.
- Outlook mesh naturally creates a cooler environment outside, and assists with lowering energy costs inside.

OUR MARKET-LEADING RANGE

			
DESIGNS 12% Openness	MODE COLOURS & TEXTURES 5% Openness	PRIVACY 1% Openness	ZERO 100% Visual Block-out



THE OUTLOOK ADVANTAGE



15-YEAR UV WARRANTY

Outlook is a proven performer and is supported with an industry-leading 15-year UV warranty.



GREENGUARD GOLD® CERTIFIED

Outlook is engineered with environmental responsibility as one of its key criteria. The lead and phthalate-free formulation provides low emissions and is Gold Level certified by Greenguard.



MICROBAN® TECHNOLOGY

Outlook fabrics include Microban anti-microbial technology. This provides ease of maintenance by inhibiting mould and mildew growth.



DOW® ECOLIBRIUM™ BIO-BASED PLASTICISER TECHNOLOGY

Outlook features the exclusive bio-based Dow Ecolibrium plasticiser technology which reduces greenhouse gases by 40%. Dow Ecolibrium preserves the equivalent of 1 litre of oil for every 10 square metres of fabric compared to petroleum-based equivalents.



FIRE RETARDANT

Outlook fabrics are designed for commercial environments and are tested to the relevant Australian standards. (Not including Outlook Designs)



DURABLE & EASY TO MAINTAIN

The Outlook collection is as durable as it is stylish and is designed to handle high traffic applications with ease. Outlook mesh is easy to maintain and only requires occasional cleaning using a mild detergent then rinsing with clean water. Comprehensive care details are available on the Ricky Richards website or by request from Ricky Richards (Sales) P/L.



INSPIRED BY COLORBOND®

A selection of colours throughout the Outlook collection are inspired by COLORBOND® matching any existing outdoor theme.



LEAD-FREE

Outlook fabrics manufactured by Phifer Incorporated are lead-free. These fabrics pass some of the most stringent US standards for heavy metals such as US Product Safety Commission Section 101 and ANSI/WCMA A100.1-2007 for lead content.



PRINTABLE

Mode Colours, Outlook Privacy and Outlook Zero colours are printable fabrics and have the printing compatibility for Solvent and UV printers.

APPLICATIONS

EXTERNAL
BLINDS



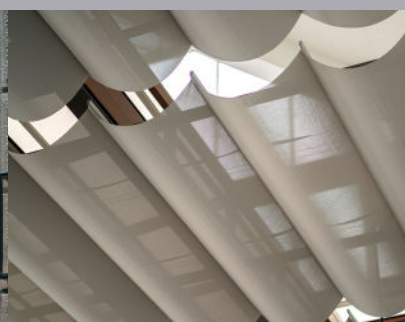
PIVOT ARM
AWNINGS



LOCK ARM
AWNINGS



SLIDING SHADE
SYSTEMS



OUTLOOK® MODE COLOURS 95% SHADE COVER, 5% OPENNESS

One of the most versatile products of the Outlook mesh collection with a 'do it all' reputation. The construction features a 5% openness allowing for sun and weather protection, moderate airflow and uninterrupted views. Australia's number one selling outdoor mesh range.



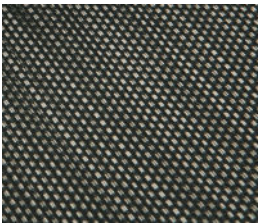
*Inspired by COLORBOND®

TECHNICAL SPECIFICATIONS

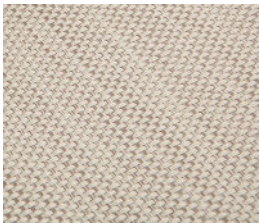
Roll Widths	275cm & 320cm	Roll Length	30m
Shade Cover	95%	Openness	5%
Nominal Weight	540gsm	Fabric Type	2 x 2 weave, PVC coated polyester mesh
Tensile Strength (AS2001.2.3.1-2001)	Warp: 3225N/50mm Weft: 2180N/50mm	Elongation at Break	Warp: 29% Weft: 26%
Wing Rip (AS2001.2.10-1986)	Warp: 161N Weft: 119N		

OUTLOOK® TEXTURES 95% SHADE COVER, 5% OPENNESS

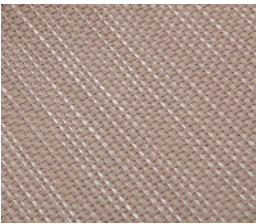
Outlook Textures is a versatile product, with a 5% openness allowing for sun and weather protection, moderate airflow and uninterrupted views.



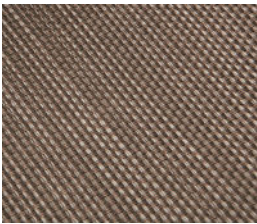
907 ANISEED



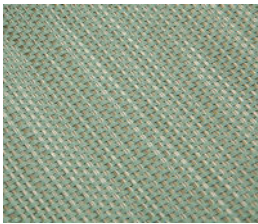
909 STUCCO



901 GOLDEN GLOW



903 SMOKEY QUARTZ



905 PEPPERMINT

TECHNICAL SPECIFICATIONS

Roll Width	320cm	Roll Length	30m
Shade Cover	95%	Openness	5%
Nominal Weight	540gsm	Fabric Type	2 x 2 weave, PVC coated polyester mesh & bi-colour yarn
Tensile Strength (AS2001.2.3.1-2001)	Warp: 3225N/50mm Weft: 2180N/50mm	Elongation at Break	Warp: 29% Weft: 26%
Wing Rip (AS2001.2.10-1986)	Warp: 161N Weft: 119N		

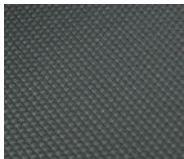


OUTLOOK® PRIVACY 99% SHADE COVER, 1% OPENNESS

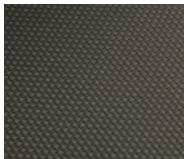
Our Outlook Privacy mesh features a 1% openness, providing additional privacy and increased sun protection, while still maintaining moderate views.



411 BASALT®



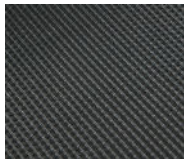
401 GUNMETAL



412 MONUMENT®



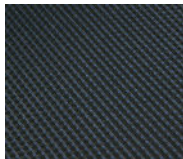
403 STORM



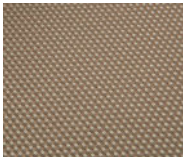
408 SHADOW



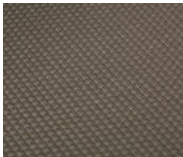
400 EBONY



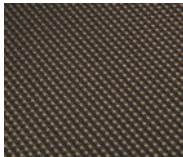
407 BLACK OPAL



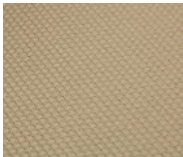
404 PAPERBARK®



409 COLORADO



402 CHESTNUT



406 DESERT

*Inspired by COLORBOND®

TECHNICAL SPECIFICATIONS

Roll Width	320cm	Roll Length	20m
Shade Cover	99%	Openness	1%
Nominal Weight	650gsm	Fabric Type	2 x 2 weave, PVC coated polyester mesh
Tensile Strength (AS2001.2.3.1-2001)	Warp: 3772N/50mm Weft: 1409N/50mm	Elongation at Break	Warp: 32.6% Weft: 16.1%
Wing Rip (AS2001.2.10-1986)	Warp: 234N Weft: 122N		



OUTLOOK® ZERO & ZERO STRIPES 100% VISUAL BLOCK-OUT

The Outlook Zero range offers a selection of contemporary solid and stripe colourways. This range is a 100% visual block-out mesh, providing exceptional weather protection and total privacy.



*Inspired by COLORBOND®

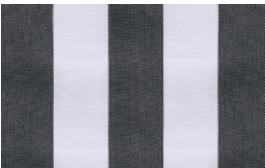
TECHNICAL SPECIFICATIONS

Roll Width	320cm	Roll Length	25m
Shade Cover	100%	Openness	0%
Nominal Weight	650gsm	Fabric Type	2 x 2 weave, PVC coated polyester mesh
Tensile Strength (AS2001.2.3.1-2001)	Warp: 980N/50mm Weft: 3600N/50mm	Elongation at Break	Warp: 19.5% Weft: 34.5%
Wing Rip (AS2001.2.10-1986)	Warp: 581N Weft: 199N		



OUTLOOK® DESIGNS 88% SHADE COVER, 12% OPENNESS

Outlook Designs is a selection of traditional stripe in a 12% openness construction. It offers aesthetic appeal and general weather protection.



640 ZEBRA



644 NAMBUCCA



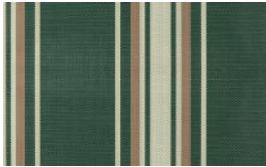
618 WANDA



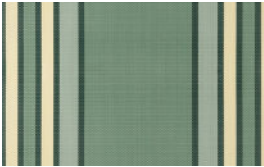
636 STRADBROKE



672 FEDERATION



648 DAINTREE



625 PALM BEACH



642 GUMLEAF

TECHNICAL SPECIFICATIONS

Roll Width	275cm	Roll Length	30m
Shade Cover	88%	Openness	12%
Nominal Weight	490gsm	Fabric Type	2 x 1 weave, PVC coated polyester mesh
Tensile Strength (AS2001.2.3.1-2001)	Warp: 2675N/50mm Weft: 1145N/50mm	Elongation at Break	Warp: 28% Weft: 29%
Wing Rip (AS2001.2.10-1986)	Warp: 171N Weft: 103N		



ONLY OUTLOOK USES



Plasticisers give fabrics their pliability, or unique ability to bend and flex without cracking, breaking or holding memory. Fabrics made with Dow Ecolibrium bio-based plasticisers offer a renewable, plant-based alternative to those made with traditional petroleum-based plasticisers, lowering greenhouse gases by 40%. This technology also improves performance, offering the benefits of heat stability, durability, abrasion resistance and UV resistance.



Made from **98%** renewable materials



Phthalate and lead free



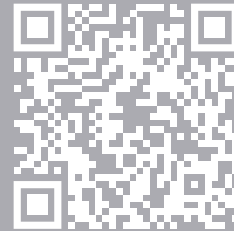
Produces lower carbon footprint



Durable and cleanable

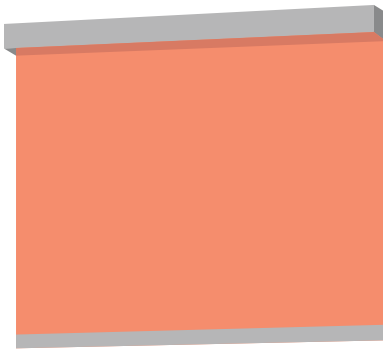


Lowers greenhouse gases by **40%**



WATCH OUR
VIDEO ON
DOW
ECOLIBRIUM
HERE

WHEN YOU USE OUTLOOK MESH, EACH STANDARD BLIND SAVES...



Up to **2kg** of CO₂ and **1L** of petrol*

*Calculated based on a standard blind being 10m²

THE AVERAGE HOME USING OUTLOOK SAVES...



Up to **12kg** of CO₂ and **6L** of petrol*

*Calculated based on a house with 6 x 10m² sized blinds

INSPIRED BY Colorbond®

A selection of colours throughout the Outlook collection are inspired by COLORBOND®, and are designed to complement any outdoor theme.

Monument®

A deep and dark grey, inspired by the volcanic formations of our Southern coastline.

Can be complemented by our colours:

Monument®, Surfmist®, Platinum, Shale Grey™



Basalt®

A cool grey inspired by the mineral tones of the ancient rock it represents.

Can be complemented by our colours:

Basalt®, Surfmist®, Platinum



Windspray®

A soft and neutral grey that evokes cool sea mists and summer breezes.

Can be complemented by our colours:

Windspray®, Chalk, Surfmist®



Shale Grey™

A light and delicate grey reflecting silvered tree bark and the engrained beauty of granite.

Can be complemented by our colours:

Shale Grey™, Chalk, Spice, Monument®



Surfmist®

A fresh and timeless colour inspired by the whitewash of surf beaches.

Can be complemented by our colours:

Surfmist®, Monument®, Woodland Grey®



Woodland Grey®

A dark, grey-green tone reminiscent of deep inland bush and coastal scrub.

Can be complemented by our colours:

Woodland Grey®, Surfmist®, Porcelain



Pale Eucalypt®

A versatile and calming colour recalling the green tones found in our native eucalypt species.

Can be complemented by our colours:

Pale Eucalypt®, Chalk, Surfmist®





IF IT'S NOT DOCRIL, IT'S JUST FABRIC!

100% solution-dyed acrylic for awnings, exterior blinds, umbrellas & outdoor furniture



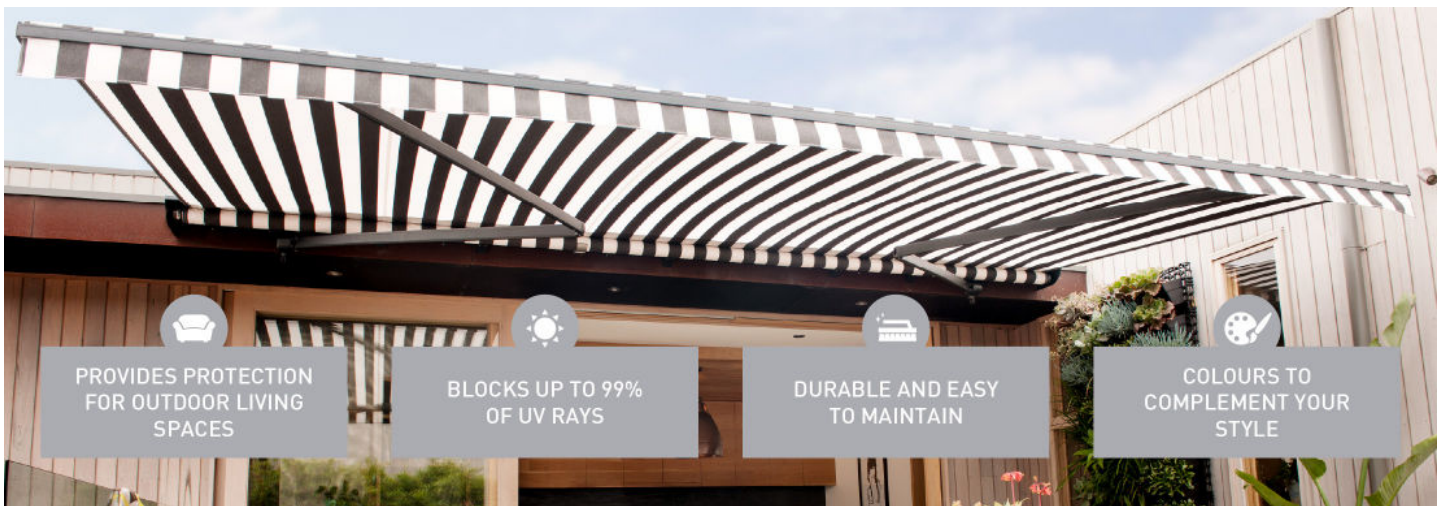
IF IT'S NOT DOCRIL, IT'S JUST FABRIC!

For 20 years, Docril has been Australia's number one choice for outdoor awnings. The collection combines superior performance with a comprehensive range of colours and designs to provide a perfect solution for solar protection.



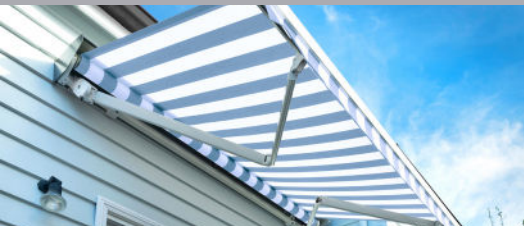
Docril is manufactured by the world renowned textile pioneer, Citel based in Spain. Since 1875, Citel have been the benchmark for outdoor technical fabrics. Their state-of-the-art facility is vertically integrated, controlling the entire process from spinning through to finishing. Citel has a deserved reputation for innovation and stringent quality control. Simply put, Docril is engineered to last.

- Docril is woven using 100% solution-dyed acrylic. A resilient yarn that is colour-fast and will perform for years under the harsh Australian elements.
- Not only does Docril provide protection from ultra-violet radiation, it regulates temperature to provide outdoor comfort and indoor climate control.
- Docril is a stylish fabric available in a comprehensive selection of colours, textures, and stripes.
- Docril fabrics are finished with a treatment which provides water repellency and ease of cleaning.



APPLICATIONS

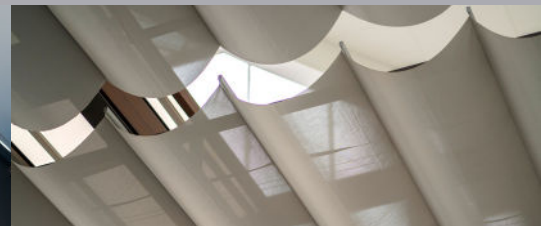
AWNINGS



EXTERIOR BLINDS



SLIDING SHADE SYSTEMS



UMBRELLAS



BOAT HOODING & COVERS



OUTDOOR FURNITURE



THE DOCRIL DIFFERENCE



FULL 10-YEAR UV WARRANTY

Docril is a premium quality fabric that is supported with a full 10-year UV warranty. Engineered to last in direct sunlight, performance is paramount without compromise.



100% SOLUTION-DYED ACRYLIC

Docril is engineered with a resilient solution-dyed acrylic yarn. This technology provides exceptional colour stability, durability and performance under the harsh Australian elements. Using the solution dyeing method, the colour becomes an integral part of the yarn through to the core.



UV STABILISED

Docril fabrics are UV stabilised which prevents them from fading under intense UV rays. This also increases the textiles' longevity and ensures easy cleaning.



DURABLE & EASY TO MAINTAIN

Docril fabrics are as durable as they are stylish and are designed to handle high traffic applications with ease. In outdoor situations these fabrics should be hosed regularly to remove dust, bird droppings and other solid particles and should not be rolled up or stowed away, while wet. Comprehensive care details are available on the Ricky Richards website or by request from Ricky Richards (Sales) P/L.



WATER-RESISTANT

Docril fabrics are designed to achieve the highest values possible in spray tests, which are performed to determine the resistance of fabrics to surface moisture. Docril has a resistance to a water column of up to 35cm, which is the volume of accumulated water that the fabric can support vertically before it begins to filter and drip through the fabric.



OIL-RESISTANT

Docril fabrics are treated to repel stains from oil-based products, ensuring that splashes and spills can be easily cleaned with a dry cloth and dry stains can be brushed off.

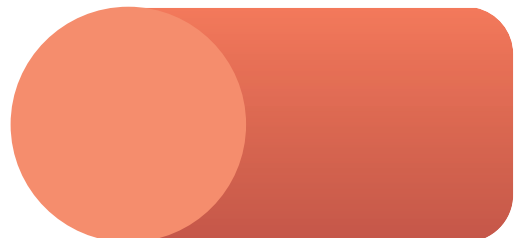
TRADITIONAL YARN-DYED ACRYLIC

Colour only penetrates the outside of the fibre



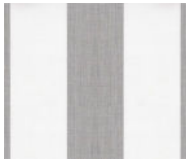
DOCRIL SOLUTION-DYED ACRYLIC YARN

Colour is consistent throughout the fibre



COLOUR RANGE

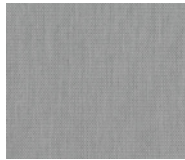
GREYS



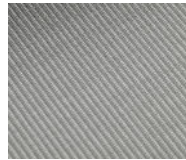
DOCIL 1267



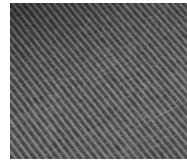
DOCIL 017



1255 TEXTURED
STONE GREY



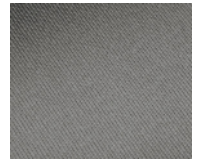
675 LIGHT GREY
TWEED



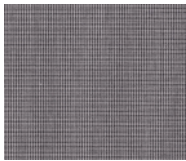
676 DARK GREY
TWEED



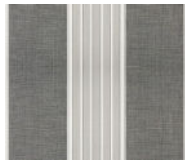
1000 FOSSIL



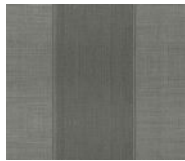
067 GREY



1261 TEXTURED
BLACK



DOCIL 1292



DOCIL 234



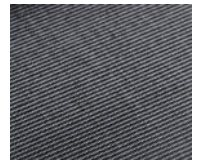
DOCIL 172



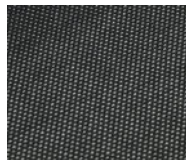
DOCIL 014



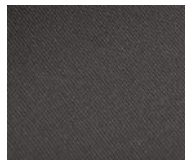
DOCIL 317



677 BLACK TWEED



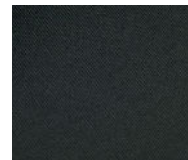
114 PEPPER



098 CHARCOAL

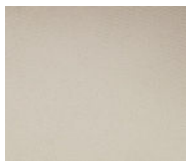


DOCIL 319



680 BLACK

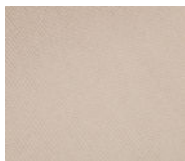
BEIGES, BROWNS & YELLOWS



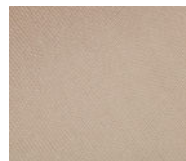
001 WHITE



DOCIL 502



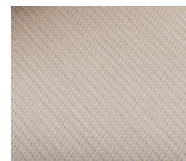
061 NATURAL



002 FAWN



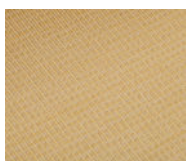
DOCIL 1290



108 PEBBLE



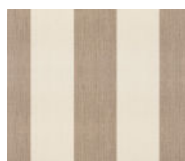
181 LEMON



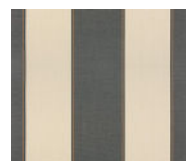
182 SANDSTONE



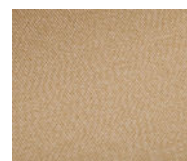
086 TOFFEE



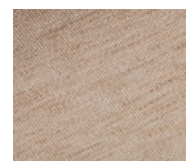
DOCIL 322



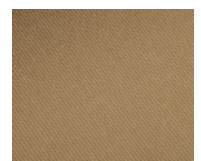
DOCIL 407



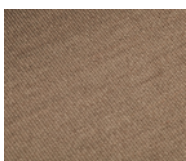
081 DESERT SAND



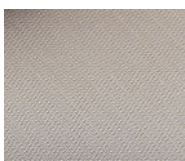
197 LINEN



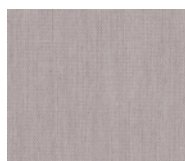
037 CAPPUCCINO



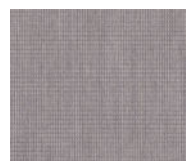
079 BARK



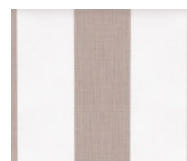
106 SMOKE



1257 TEXTURED
RUSTIC LINEN



1262 TEXTURED
WALNUT



DOCIL 1268



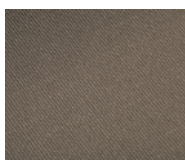
DOCIL 228



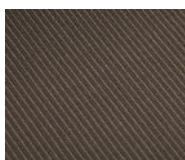
113 BROWN
TWEED



DOCIL 165



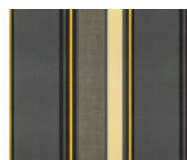
198 NUTMEG



494 CINNAMON



DOCIL 1263



DOCIL 664



DOCIL 011



003 YELLOW

COLOUR RANGE (CONTINUED)

LILACS & REDS



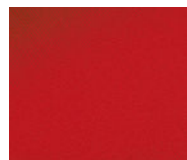
DOCRIL 1273



1271 MARBLED
LILAC



DOCRIL 1264



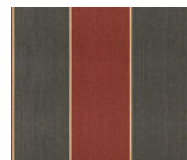
683 FLAME



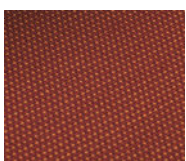
DOCRIL 028



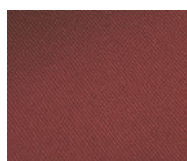
184 PAPRIKA



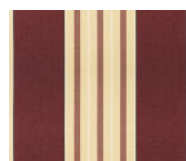
DOCRIL 558



107 EARTH



060 BURGUNDY



DOCRIL 430

BLUES & GREENS



DOCRIL 1266



492 TEAL



DOCRIL 012



DOCRIL 323



077 NAVY



DOCRIL 141



DOCRIL 432



DOCRIL 648



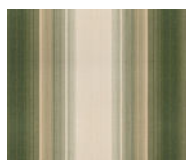
084 SAPPHIRE



DOCRIL 1265



145 ALPINE



DOCRIL 331



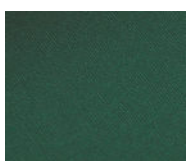
DOCRIL 362



DOCRIL 431



DOCRIL 447



072 HERITAGE
GREEN



DOCRIL 019

TECHNICAL SPECIFICATIONS

Roll Size	120cm (width) x 60m (length)	Nominal Weight	290gsm
Fabric Type	100% solution-dyed acrylic	UV Block	95% - 99%
Finish	Upper Side: Dupont Teflon®, Under Side: Polyurethane coated		

SKYLINE

PANORAMIC VIEWS, EFFORTLESS COMFORT

Mesh for external blinds, sliding shade systems & boat windscreen covers



ENHANCE YOUR ENVIRONMENT WITH SKYLINE

Skyline delivers exceptional durability, longevity and a range of modern colours and styles. This range is suitable for use with external blinds and awnings and is the perfect addition to enhance your residential or commercial environment. Skyline can also be used for some marine applications such as windscreen covers.



Skyline is manufactured by the American based global leader of solar control fabrics, Phifer Incorporated. Manufactured using stringent quality control systems and the latest technology, Skyline is the benchmark for outdoor mesh in Australia. Innovation is in the Phifer DNA with industry leading initiatives such as Dow Ecolibrium and Microban.



10-YEAR UV WARRANTY

Skyline is a proven performer and is supported with a 10-year UV warranty.



FIRE RETARDANT

Skyline fabrics are designed for residential and commercial environments and are tested to the relevant Australian standards.



GREENGUARD GOLD® CERTIFIED

Skyline is engineered with environmental responsibility as one of its key criteria. The lead and phthalate-free formulation provides low emissions and is Gold Level certified by Greenguard.



MOULD & MILDEW RESISTANT

Skyline has been finished with a treatment that provides ease of maintenance by inhibiting mould and mildew growth. This also improves the textiles' longevity and makes for easy cleaning.



DURABLE & EASY TO MAINTAIN

Skyline is as durable as it is stylish and is designed to handle high traffic applications with ease. Skyline mesh is easy to maintain and only requires occasional cleaning using a mild detergent then rinsing with clean water.



INSPIRED BY COLORBOND®

A selection of colours throughout the Skyline collection are inspired by Colorbond®, matching any existing outdoor theme.

EXTERNAL BLINDS



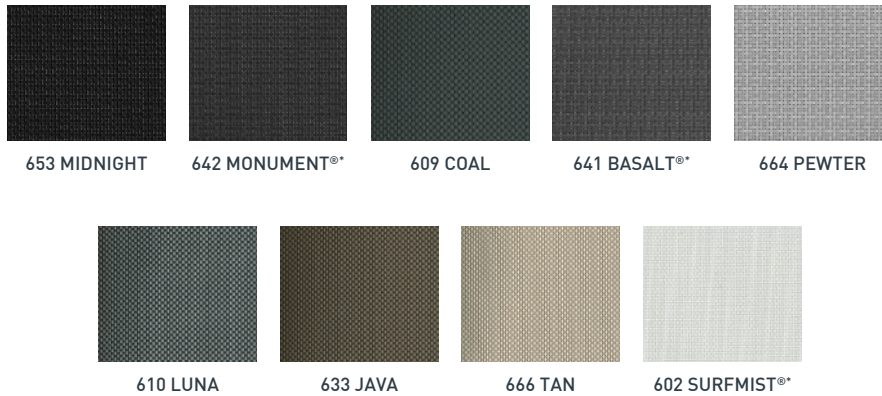
SLIDING SHADE SYSTEMS



BOAT WINDSCREEN COVERS



SKYLINE 94 COLOUR RANGE 94% SHADE COVER, 6% OPENNESS

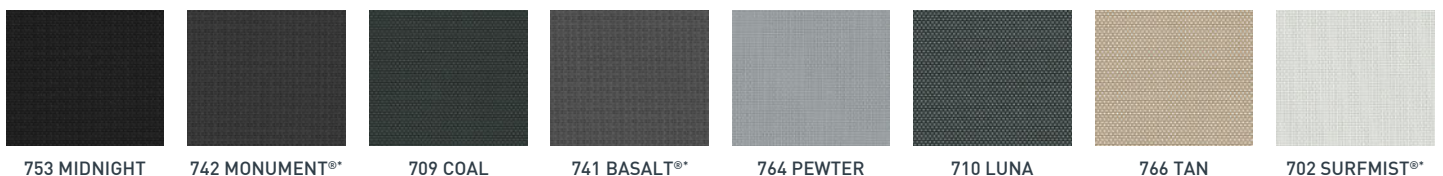


*Inspired by COLORBOND®

SKYLINE 94 TECHNICAL SPECIFICATIONS

Roll Sizes	320cm (width) x 30m (length) – all colours		
	275cm (width) x 30m (length) – Midnight, Monument & Coal only		
Construction	2 x 2 weave, PVC coated polyester mesh	Tensile Strength	Warp: 2400N/50mm Weft: 2200N/50mm
Tear Strength	Warp: 130N Weft: 121N	Elongation at Break	Warp: 28% Weft: 29%
Weight	595gsm	Thickness	0.84mm

SKYLINE 99 COLOUR RANGE 99% SHADE COVER, 1% OPENNESS



*Inspired by COLORBOND®

SKYLINE 99 TECHNICAL SPECIFICATIONS

Roll Size	320cm x 25m		
Construction	2 x 2 weave, PVC coated polyester mesh	Tensile Strength	Warp: 3400N/50mm Weft: 2900N/50mm
Tear Strength	Warp: 94N Weft: 138N	Elongation at Break	Warp: 26% Weft: 17.5%
Weight	670gsm	Thickness	1mm



Ricky Richards (Sales) Pty. Ltd | ABN 18 000 946 725
1300 RICKYS (1300 742 597)
sales@rickyrichards.com.au
rickyrichards.com.au

JANUARY 2026

Information contained in this brochure is accurate and based on the latest product information available at the time.
Please be aware that a slight colour difference may occur when using different online devices or when printed.

While Ricky Richards (Sales) P/L makes all efforts to provide accurate information,
we maintain the right to make changes as necessary.



EXPLORE
OUR BLINDS
& AWNINGS
RANGE