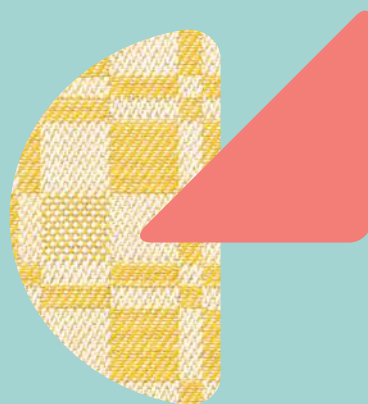




Upholstery

# BITS

COLLECTION



# BLISS

EMOTIONAL PERFORMANCE FABRICS

# BLISS

EMOTIONAL PERFORMANCE FABRICS

BLISS is a new brand created by people who have been in the textile industry for a very long time. We have inherited the technical knowledge and resources of Citel – the outdoor performance fabrics manufacturer founded back in 1875 in Barcelona – and added a special sensitivity and aesthetic perspective. BLISS mission is to manufacture performance and decorative fabrics made by and for the senses.

Our team wanted to create a brand that not only demonstrated their technical know-how regarding 100% solution-dyed acrylic fabrics, but also expressed their philosophy of life. BLISS is built on passion, new ideas, effort and an ongoing desire for improvement.

**Creating is our favourite state of mind - our bliss -, and the desire to imagine, envision and manufacture fabrics that are truly special is our very reason for being.**

## Colour BITS collection

Decoding digital drift into emotions.

Technology simplifies reality into binary and overlooks a wide range of nuances. It can be efficient, but not animate; sleek, but not exciting. Our aim is to emphasise precisely the opposite of this perception.




This collection decodes digital drift into the emotions and feelings of those who struggle daily to understand and adapt to today's fast-paced technological society.

Our aim is to add a twist to digitally-inspired patterns and shapes and give them new meaning by combining them with vivid colours, so that you really feel something – to avoid indifference and trigger profound emotions.

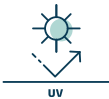
Green, blue, red, yellow – an intense but light-hearted vision of our digital world.




BITS COLLECTION

Composition:	100% solution dyed acrylic
Outdoor and indoor use	  
Width:	140 cm (55")
Roll length:	50 m (55 yards)
Warranty:	5 years


Features




UV resistant




Maximum color fastness




Eco long-lasting




Water repellent




Stain repellent




Rotproof and mildew resistant



Suitable for aquatic environments



Easy care



Bleach cleanable

Flame retardancy	Cleaning instructions
NFPA 260    EN 1021-1    BS 5852-1(54)    CA TB 117	    

Technical data	Standard	Bitmap	Giga	Icon	Pixel	Scroll
Weight (g/m²):	UNE 40339	320	245	350	245	245
Rapport: (H x V)		4,5 x 4,5 cm 1,77 x 1,77"	17,5 x 10 cm 6,89 x 3,94"	17,5 x 33,5 cm 6,89 x 13,19"	7 x 7 cm 2,75 x 2,75"	7 x 12 cm 2,75 x 4,72"
Spray Test (max. 100)	UNE-EN ISO 4920	100	100	100	100	100
Oil repellency (Max 6)	AATCC 118	6	6	6	6	6
Colour fastness to artificial weathering (max. 8):	UNE-EN ISO 105-B04	7-8	7-8	7-8	7-8	7-8
Colour fastness to artificial light (max 8)	UNE-EN ISO 105-B02	7-8	7-8	7-8	7-8	7-8
Colour fastness to chlorinated water (swimming-pool water) (max. 5):	UNE-EN ISO 105-E03	5	5	5	5	5
Colour fastness to sea water (max. 5):	UNE-EN ISO 105-E02	5	5	5	5	5

Tolerance +/- 5% average values. Non-contractual information. The data are result of tests performed in our laboratories.  
For more technical information, please contact us at [info@blissfabrics.es](mailto:info@blissfabrics.es)



BITS COLLECTION



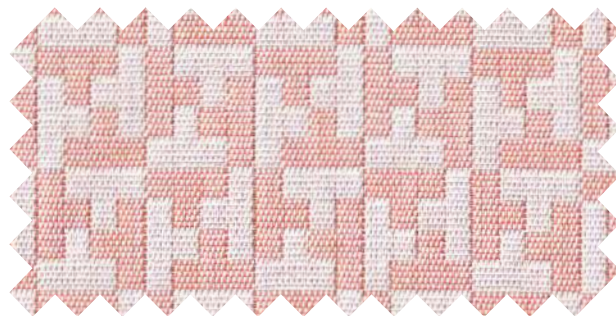
←→  
Weft direction

01118 Giga Graphite Coral  
Rapport (H x V): 17,5 x 10 cm / 6,89 x 3,94"



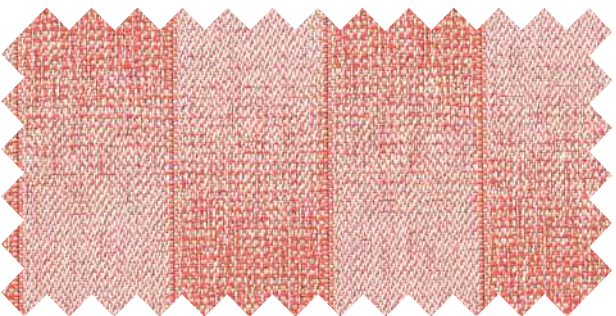
←→  
Weft direction

01128 Pixel Graphite Coral  
Rapport (H x V): 7 x 7 cm / 2,75 x 2,75"



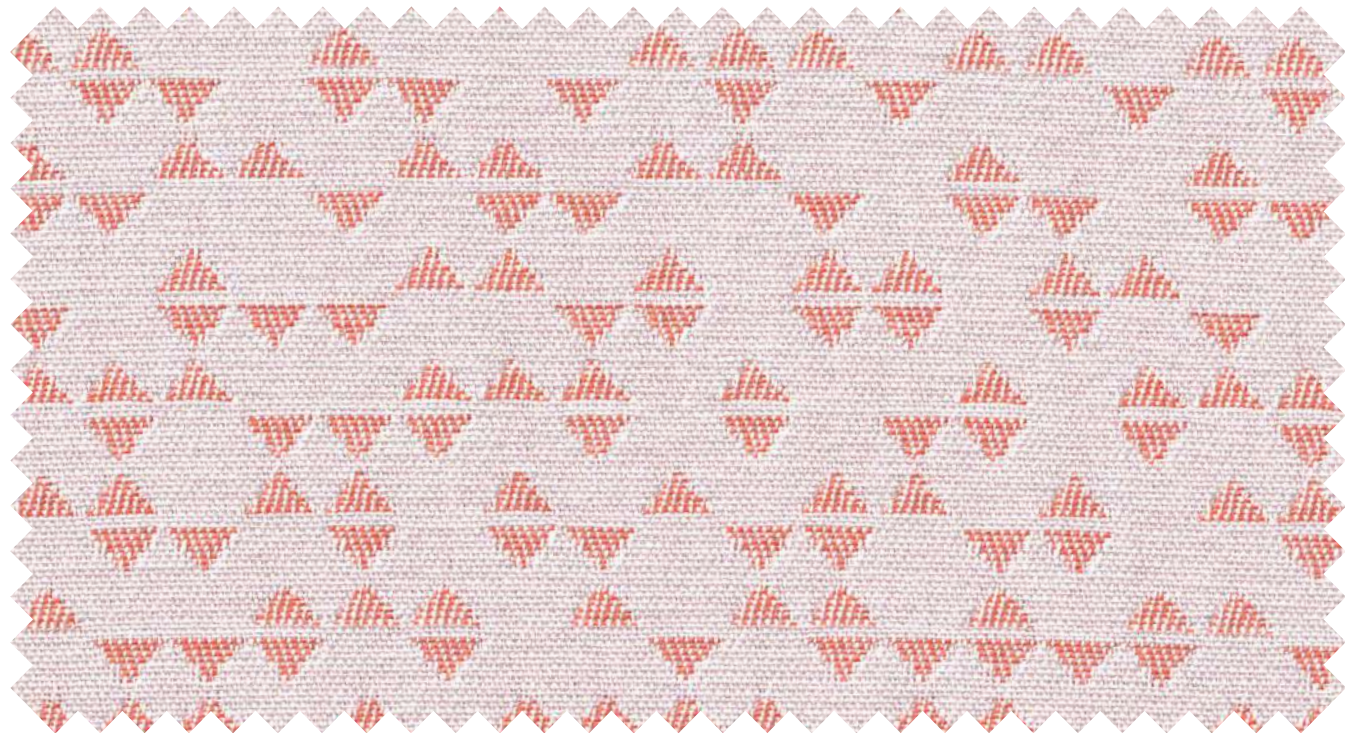
←→  
Weft direction

01111 Bitmap White Coral  
Rapport (H x V): 4,5 x 4,5 cm / 1,77 x 1,77"



←→  
Weft direction

01121 Scroll White Coral  
Rapport (H x V): 7 x 12 cm / 2,75 x 4,72"



←→  
Weft direction

01109 Icon White Coral  
Rapport (H x V): 17,5 x 33,5 cm / 6,89 x 13,19"



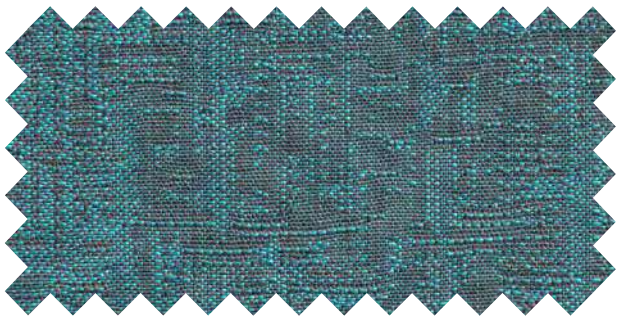


BITS COLLECTION



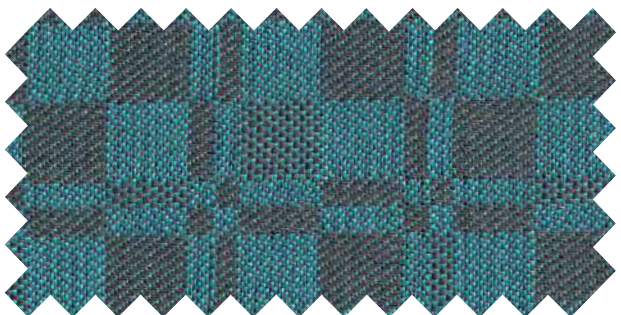
↔  
Weft direction

01120 Scroll White Aruba  
Rapport (H x V): 7 x 12 cm / 2,75 x 4,72"



↔  
Weft direction

01119 Giga Graphite Aruba  
Rapport (H x V): 17,5 x 10 cm / 6,89 x 3,94"



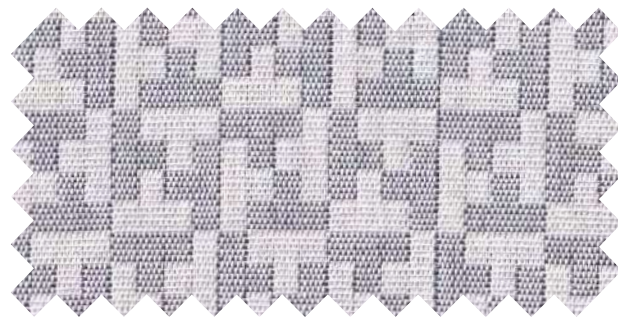
↔  
Weft direction

01129 Pixel Graphite Aruba  
Rapport (H x V): 7 x 7 cm / 2,75 x 2,75"



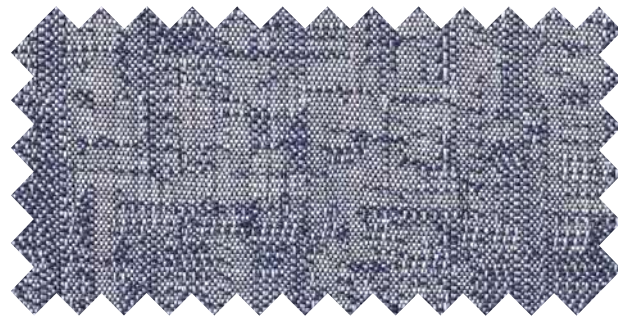
↔  
Weft direction

01108 Icon White Aruba  
Rapport (H x V): 6,89 x 13,19" / 17,5 x 33,5 cm



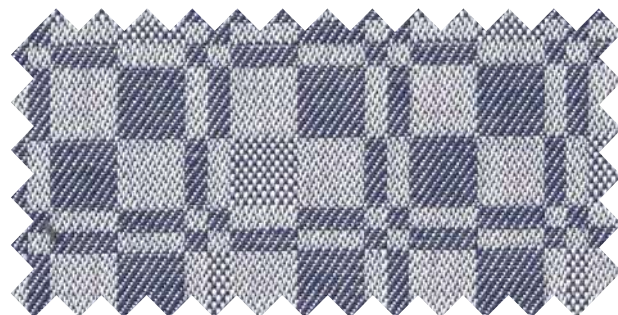
↔  
Weft direction

01112 Bitmap White Blue  
Rapport (H x V): 4,5 x 4,5 cm / 1,77 x 1,77"



↔  
Weft direction

01115 Giga White Blue  
Rapport (H x V): 17,5 x 10 cm / 6,89 x 3,94"



↔  
Weft direction

01125 Pixel White Blue  
Rapport (H x V): 7 x 7 cm / 2,75 x 2,75"

*Creating is our favourite state of mind*





BITS COLLECTION



←→  
Weft direction

01110 Icon White Yellow  
Rapport (H x V): 17,5 x 33,5 cm / 6,89 x 13,19"



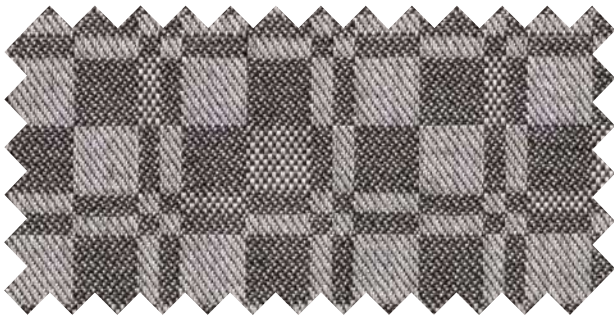
←→  
Weft direction

01114 Bitmap Graphite Yellow  
Rapport (H x V): 4,5 x 4,5 cm / 1,77 x 1,77"



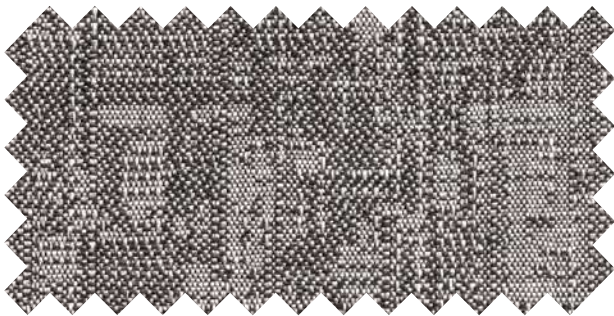
←→  
Weft direction

01127 Pixel White Yellow  
Rapport (H x V): 7 x 7 cm / 2,75 x 2,75"



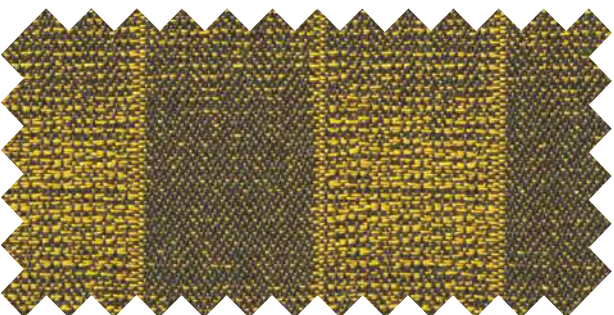
←→  
Weft direction

01126 Pixel White Black  
Rapport (H x V): 7 x 7 cm / 2,75 x 2,75"



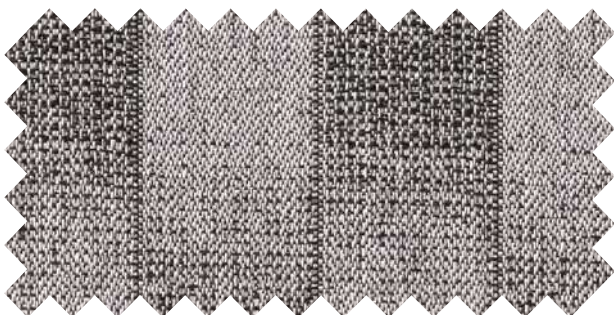
←→  
Weft direction

01116 Giga White Black  
Rapport (H x V): 17,5 x 10 cm / 6,89 x 3,94"



←→  
Weft direction

01124 Scroll Graphite Yellow  
Rapport (H x V): 7 x 12 cm / 2,75 x 4,72"



←→  
Weft direction

01122 Scroll White Black  
Rapport (H x V): 7 x 12 cm / 2,75 x 4,72"

Arise emotions and awake people senses





## BITS COLLECTION



↔  
Weft direction

01117 Giga White Green  
Rapport (H x V): 17,5 x 10 cm / 6,89 x 3,94"



↔  
Weft direction

01107 Icon White Green  
Rapport (H x V): 17,5 x 33,5 cm / 6,89 x 13,19"



↔  
Weft direction


01123 Scroll Graphite Green  
Rapport (H x V): 7 x 12 cm / 2,75 x 4,72"



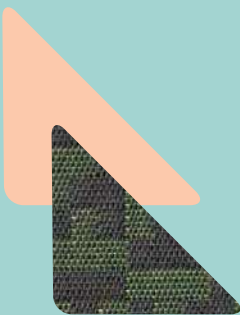
↔  
Weft direction

01113 Bitmap Graphite Green  
Rapport (H x V): 4,5 x 4,5 cm / 1,77 x 1,77"


*Behind this collection there is a story*



*We have had a long and beautiful  
love story with textiles for more than  
100 years. Now, we are ready for this  
new chapter in which we have found  
our true-self.*



*We will keep working to make Bliss a  
design-led innovator and fuse the  
technical branch of performance  
fabrics with the boundless creativity  
of the world of emotions, fashion and  
decorative textiles.*



[blissfabrics.com](https://blissfabrics.com)

*Designed and manufactured  
with passion in Barcelona*

**BLISS**

EMOTIONAL PERFORMANCE FABRICS

by **Citel®**

